

Port of Ashburton – New Port Boundary, Gazette Order – 23, 8th March 2024 , 490.

Number: A02-2024

Date: 14/03/2024

Date of Effect:	18/03/2024
Details:	Port of Ashburton – New Port Boundary
Former Notice:	Nil
Charts & Publications:	AUS 64
Further Notice:	Nil
Attachments:	Chartlet Depicting the New Port Boundary

The Port of Ashburton port boundary is amended through the WA Gazette Order 23, 8th March 2024, 490 and the Deposited Plan - 426197.

The VTS area of coverage is extended to encapsulate the full extent of the amended port boundary. A shipping fairway within the port boundary has been created to facilitate transiting vessels. The amended port boundary also encapsulates the newly created deepwater anchorages.

The Port of Ashburton waters, anchorages and shipping fairway including seabed, is ascribed within the below coordinates and depicted in the attachment. Updates in the Port Handbook, associated plans and procedures to follow.

Port Boundary Coordinates

LABEL	LATITUDE	LONGITUDE
1	21° 32.729' S	114° 47.092' E
2	21° 30.209' S	114° 46.299' E
3	21° 31.962' S	114° 41.211' E
4	21° 29.636' S	114° 41.205' E
5	21° 28.930' S	114° 43.606' E
6	21° 28.786' S	114° 43.794' E
7	21° 19.929' S	114° 52.743' E
8	21° 17.233' S	114° 55.462' E
9	21° 17.384' S	114° 59.300' E
10	21° 19.899' S	114° 57.011' E
11	21° 20.922' S	114° 56.081' E
12	21° 29.449' S	114° 56.122' E
13	21° 29.449' S	115° 02.621' E
14	21° 31.669' S	115° 02.620' E
15	21° 31.276' S	115° 02.722' E
16	21° 31.359' S	115° 03.079' E
17	21° 33.122' S	115° 02.619' E
18	21° 33.240' S	115° 02.619' E
19	21° 38.820' S	115° 05.523' E
20	21° 38.826' S	115° 05.523' E
21	21° 40.271' S	114° 58.351' E
22	21° 35.682' S	114° 56.152' E
23	21° 35.609' S	114° 56.396' E
24	21° 34.749' S	114° 56.395' E

All current local Marine Notices are available on our website: <http://www.pilbaraports.com.au/#marine-notices>

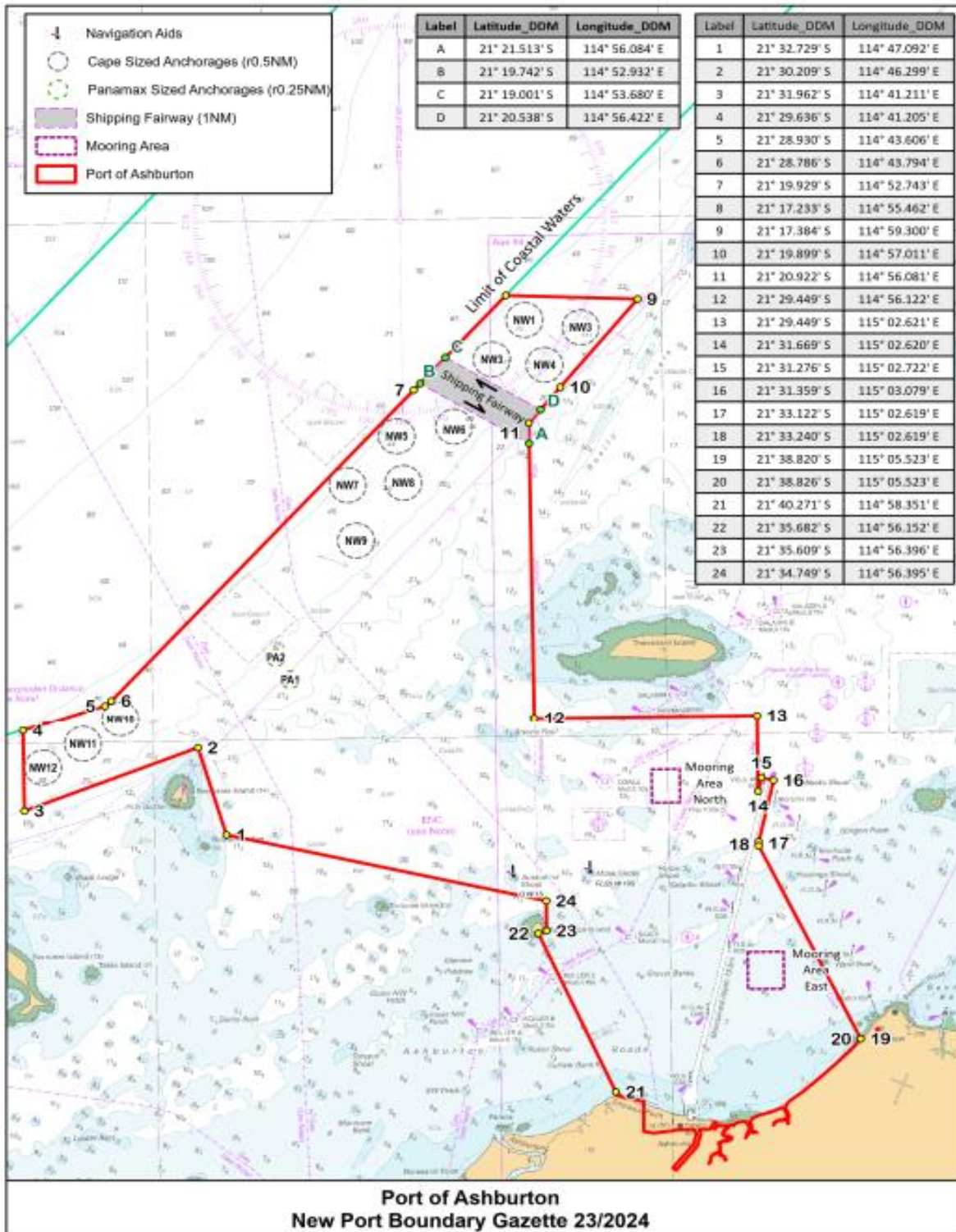
Mariners and other port users are requested to notify the Harbour Master on the discovery of new dangers or suspected dangers to navigation within the Port.
Ashburton VTS | Phone: (08) 9159 6556 | dampier.vts@pilbaraports.com.au

Shipping Fairway Coordinates

LABEL	LATITUDE	LONGITUDE
A	21° 21.513' S	114° 56.084' E
B	21° 19.0742' S	114° 52.932' E
C	21° 19.001' S	114° 53.680' E
D	21° 20.538' S	114° 56.422' E

Anchorage Coordinates

ANCHORAGE	LATITUDE	LONGITUDE
NW 1	21° 17.95' S	114° 56.00' E
NW 2	21° 18.18' S	114° 57.63' E
NW 3	21° 19.07' S	114° 55.03' E
NW 4	21° 19.25' S	114° 56.56' E
NW 5	21° 21.25' S	114° 52.23' E
NW 6	21° 21.00' S	114° 53.90' E
NW 7	21° 22.65' S	114° 50.78' E
NW 8	21° 22.60' S	114° 52.40' E
NW 9	21° 24.25' S	114° 51.00' E
NW 10	21° 29.33' S	114° 44.05' E
NW 11	21° 30.05' S	114° 42.95' E
NW 12	21° 30.72' S	114° 41.77' E
PA 1	21° 28.23' S	114° 49.02' E
PA 2	21° 27.59' S	114° 48.61' E



Anurodh

Capt. Anurodh Prasad
Harbour Master, Ashburton

All current local Marine Notices are available on our website: <http://www.pilbaraports.com.au/#marine-notice>

Mariners and other port users are requested to notify the Harbour Master on the discovery of new dangers or suspected dangers to navigation within the Port.
Ashburton VTS | Phone: (08) 9159 6556 | dampier.vts@pilbaraports.com.au