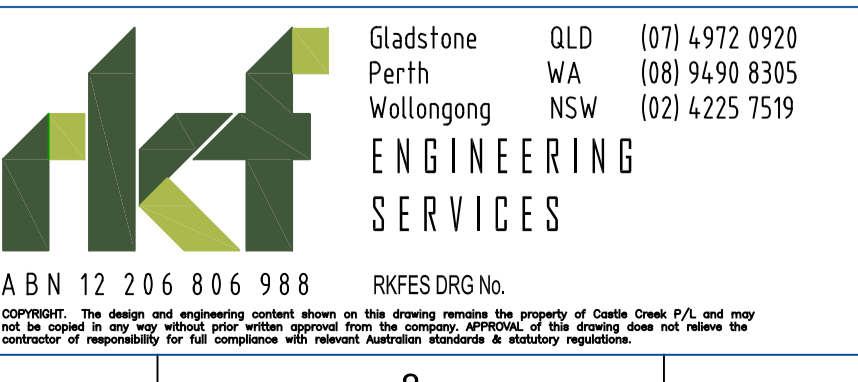


- NOTES:**
- ALL LOADS ASSUME VEHICLES ARE LIMITED TO 10km/h.
 - LOAD LIMITS ASSUME NO OTHER CONCURRENT LOADING WITHIN 7m OF EACH OTHER INCLUDING VEHICLES, SHIP LOADER OR STOCKPILED MATERIAL. FURTHER ASSESSMENT IS REQUIRED IF CONCURRENT LOADS ARE EXPECTED.
 - VEHICLE AXLE LOAD LIMITS SHOWN IN THE TABLE APPLY TO EACH AXLE OF A VEHICLE, REGARDLESS OF AXLE CONFIGURATION.
 - VEHICLES WHICH CONFORM TO NATIONAL GENERAL, CONCESSIONAL OR HIGHER MASS LIMITS IN ACCORDANCE WITH THE NATIONAL HEAVY VEHICLE REGULATOR CAN ACCESS ALL WHARF AREAS.
 - OUTRIGGER SPREADERS TO CONSIST OF A MINIMUM 2 LAYER OF 100mm THICK TIMBER.

LOAD LIMITS				
AREA	OUTRIGGER LOAD (TONNE) USING 0.5m X 0.5m FOOTPRINT OR FRANNA CRANE TYPE GROUP	OUTRIGGER LOAD (TONNE) USING 1.2m X 1.2m FOOTPRINT	MAX AXLE LOAD (TONNE)	UNIFORMLY DISTRIBUTED LOAD (kg/m ²)
1	50	50	12	1500
2	20	20	12	
3	50	100	12	
4	31	50	12	
5	50	50	12	NO LOAD
6	NO LOAD	NO LOAD	12	
7	15	15	12	
8	20	20	12	

NUMBER	REFERENCE DRAWINGS	REV	DATE	REVISIONS	DES	DRN	CHK	APP
		5	28.07.21	LOADS REVISED TO SUIT PILE CAPACITY	G.A.	T.L.	G.A.	RKF
		4	12.09.18	UPDATED FOR 2018 CONDITION	G.A.	T.M.	G.A.	RKF
		3	15.09.17	MODIFIED MAX AXLE LOADS IN AREA 6	G.A.	S.L.	G.A.	RKF
		2	18.05.17	MODIFIED REAR SHIPLOADER BEAM AREA	G.A.	S.L.	G.A.	RKF
		1	15.05.17	ISSUED AS PRELIMINARY	G.A.	J.P.	G.A.	RKF
		0	18.04.17	ISSUED AS PRELIMINARY	G.A.	S.L.	G.A.	RKF



PROJECT / DRAWING INFORMATION	
PROJECT NUMBER	PPA67817
DESIGNED BY	G.A.
DRAWN BY	S.L.
CHECK BY	G.A.
APPROVED BY	RKF
DATE APPROVED	18.04.17

PILBARA PORTS AUTHORITY	
BERTH 1	
CONCRETE DECK	
LOADING DIAGRAM	
SCALE AS NOTED	A1
DRAWING NUMBER	PPA-17-0015
REV	5