

A vertical strip on the left side of the cover shows an aerial view of a port. A large orange and white bulk carrier ship is docked at a pier, with a smaller tugboat nearby. The water is a deep blue, and the sky is clear.

BULK LIQUID TRANSFER PROCEDURE – PORT OF PORT HEDLAND

TABLE OF CONTENTS

1.	DISTRIBUTION LIST	2
2.	SCOPE	3
3.	PPE.....	3
MANDATORY PPE STANDARDS APPLY TO ALL PERSONS UNDERTAKING THE ESTABLISHMENT OF A FUEL BERTH AS WELL AS THE DISCHARGE AND PACK UP OPERATION. THESE REQUIREMENTS ARE IN PLACE TO ENHANCE THE SAFETY OF PERSONNEL.		
4.	BERTH POWER DISCONNECTION.....	4
5.	SAFETY AND FIRE FIGHTING EQUIPMENT	4
6.	SETUP OF THE BERTH TO RECEIVE FUEL PRODUCTS	4
6.1	For Berth 1	5
6.2	For Berth 3.....	5
6.3	Set up Complete	6
7.	BUNKER DELIVERY BY ROAD/PIPELINE	6
8.	EMERGENCY RESPONSE	7
9.	BERTH ACCESS DURING TANKER OPERATIONS	7
10.	GENERAL PROVISIONS	8
11.	PACK UP OF FUEL TANKER BERTH	9
12.	PROCESS OWNER	10

APPENDICES

13.	APPENDIX 1 – HAZARDOUS AREAS CLASSIFICATION BERTH	11
14.	APPENDIX 2 - HAZARDOUS AREAS CLASSIFICATION BERTH.....	12
15.	APPENDIX 3 – A FIRE ON BOARD A TANKER	13
16.	APPENDIX 4 - A FIRE ON THE WHARF DECK WITH A TANKER ALONGSIDE AND DISCHARGING FUEL PRODUCTS	14
17.	APPENDIX 5 - A FIRE ON A VESSEL BERTHED AT PH NO.2 WHEN A TANKER IS ALONGSIDE PH NO.1 AND IS DISCHARGING FUEL PRODUCTS.....	15
18.	APPENDIX 6 – TANKER ON BERTH NO.1 SETUP FLOW CHART	16
19.	APPENDIX 7 – TANKER ON BERTH NO.3 SETUP FLOW CHART	17
20.	APPENDIX 8 – TANKER SAFETY SECURITY BERTH INSPECTION FORM	18

1. DOCUMENT AMENDMENT TABLE

VERSION	PREPARED BY	DATE	AMENDMENT
2	Landside Admin Officer	22/09/2015	PPA re-formatting of document in line with updated document control procedure.
3	Landside Admin Officer	28/10/2015	Several minor changes to wording and formatting throughout the document
4	Landside Superintendent	17/01/2018	Updating minor changes and formatting document.
5	Landside Superintendent	10/07/2018	Updated environmental spillage berth set up requirements and minor wording.
6	Landside Superintendent	1/11/2018	Minor wording changes to section 8
7	Landside Superintendent	12/5/2020	Minor wording changes to section 3,4,5,6 & 11
8	Landside Admin Officer	22/10/2021	Update to Appendix 7
9	A/g Landside Superintendent	21/12/2021	Update to Appendix 7 – ship loader line marks

2. DISTRIBUTION LIST

Recipient	Organisation
Maintenance Supervisor	TAMS
Operations Superintendent	QUBE Bulk
Port Superintendent	Rio Tinto/Dampier Salt

Recipient	Organisation
Terminal Manager	ATOM
Port Safety Advisor	BHP Billiton Iron Ore
Security Officers	MSS
Maintenance Manager	PPA
Vessel Traffic Service Officers	PPA
Health & Safety Advisor	PPA
Ship Scheduler	PPA
Landside Operations Coordinators	PPA
Landside Operations Superintendents	PPA
Shipping Superintendent	PPA
Landside Operations Manager	PPA
Harbour Master	PPA
Deputy Harbour Masters	PPA
General Manager Operations	PPA
Health and Safety Manager	PPA
Terminal Manager	Ampol
Maintenance Superintendent	PPA East

3. SCOPE

To define responsibilities and requirements of establishing the berth setup and pack up for:

- the discharge of Fuel Tankers,
- bunkering of ships and small craft via road tanker and via pipeline;
- Removal of oily sludge from ships and small craft.

4. PPE

Mandatory PPE standards apply to all persons undertaking the establishment of a fuel berth as well as the discharge and pack up operation. These requirements are in place to enhance the safety of personnel.

The following minimum PPE standards must be adhered to:

- Long Sleeve Hi-Visibility cotton shirt (sleeves to remain rolled down).
- Full Leg Cotton pants, alternatively Hi-Visibility Cotton Overalls.
- Hard Hat.
- Safety Glasses.
- Steel Cap Boots,
- PFD when working within 2m of the wharf face.

5. BERTH POWER DISCONNECTION

Prior to the berthing of fuel tankers, the berth shall have the non-intrinsic power disconnected in accordance with the requirements contained in this document. The specific terminal operator shall have access to the berth at least three hours prior to the arrival of the fuel tanker to undertake the works required to prepare the berth for the discharge operation.

Wharf side power disconnection is not required when bunkering via road tanker or from pipeline.

6. SAFETY AND FIRE FIGHTING EQUIPMENT

The following safety and firefighting equipment must be present and operational for the setup, discharge and pack up of fuel lines and manifolds in support of bulk fuel transfer from a tanker vessel:

- Emergency eye wash station and/or shower.
- Two 45kg dry powder fire extinguishers (to be mounted on a wheeled cradle).
- Foam skids or foam producing branch, hose and concentrator.
- Ship to shore fire hose with international connection.
- Signage prohibiting mobile phones, ignition sources.
- PPA spill bin.
- Spill bins provided by receiver, containing absorbent pads and booms. The spill bins should contain:
 - absorbent pads,
 - 1.2m socks,
 - 3.6m socks,
 - pillows,
 - pair of coveralls,
 - pair of gloves,
 - pair of goggles,
 - disposal bags,
 - Spill response guide.

Prior to the installation of the manifold, fuel hoses or any other equipment related to the discharge of fuel, the equipment listed above must be in place and operational. Setup of manifolds and hoses will only commence once the equipment has been inspected, approved by the Landside Operations staff and a wharf watch person is in place.

7. SETUP OF THE BERTH TO RECEIVE FUEL PRODUCTS

The following steps outline the chronological order for the establishment of a berth in preparation for the arrival of a fuel tanker:

- Safety Shower is clean, tested and working.
- Power is disconnected to ship loader – PPA will disconnect power to berth 1 and berth 1 ship loader. PPA will disconnect L/V power to berth 3 and DSL will disconnect HV power to berth 3 shiploader and CV800. Power to the sea water pumps can remain connected with the remainder of services disconnected.
- Firefighting equipment is setup as per specifications and made ready – completed by PPA maintenance.

- Ship to shore fire hose is placed at water connection – completed by the PPA maintenance.
- Fire extinguishers are placed on either side of the manifold. Completed by product receiver/terminal operators.
- Spill bins are in place on the wharf central to the set-up area – Product receiver to provide comprehensive spill response bin, PPA spill bin remains in situ as backup.
- Spill bins provided by receiver, containing absorbent pads and booms. The spill bins should contain;
 - absorbent pads,
 - 1.2m socks,
 - 3.6m socks,
 - pillows,
 - pair of coveralls,
 - pair of gloves,
 - pair of goggles,
 - disposal bags,
 - Spill response guide.

7.1 For Berth 1

- Power is disconnected on the berth – see Berth one tanker disconnection WI (A317579). The PPA lock box and documentation will also be placed at the wharf sentry position.
 - Northern ramp gate is closed, signage placed – Completed by PPA Maintenance team.
 - Wharf watchperson station is setup and manned, mobile phone/ignition signage is placed – Completed by stevedores/terminal operator's representative.
 - Signage and temporary fencing installed at southern end of wharf – Completed by PPA Maintenance team.
 - A flow chart is located at Appendix 6 that is an aid to identifying the actions and order to be undertaken when setting up Berth No.1
 - Absorbent 8" sausage/socks are to be linked and placed either side of the fuel hoses. Socks must run from the bund wall at the rear of the berth and continue to the bund wall at the water side of the berth. Please see Appendix 1 for location diagram.
 - Setup of manifolds and fuel hoses commences – Receivers contractors/terminal operators to complete.
 - Once complete all vehicles removed or isolated; physical barriers and signage installed on southern end of wharf – Undertaken by crew working on the manifold and hoses/terminal operator's representatives.
- Landside operations to complete checklist and place cable ties on Northern gates. A handover checklist will be completed, and a copy provided to the terminal operators/receiver.

7.2 For Berth 3

- PPA electrician to disconnect low voltage power to berth 3.
- DSL electrician is to disconnect/isolate all HV power to berth 3 with the exception of the sea water pumps which can remain connected. Once the DSL

isolation is complete, the isolation board will be positioned at the wharf sentry position behind the berth 3 manifolds. The PPA lock box and documentation will also be placed at the wharf sentry position.

- Southern and Northern ramp gates closed, signage placed – Completed by PPA maintenance.
- Wharf watchpersons station is setup and manned, mobile phone/ignition signage is placed –Receiver/terminal operator's representatives coordinates/undertakes manning of the station.
- Absorbent 8" sausage/socks are to be linked and placed either side of the fuel hoses. Socks must run from the bund wall at the rear of the berth (either side of the manifolds) and continue to the bund wall at the water side of the berth. Please see Appendix 2 for location diagram.
- Setup of fuel manifolds and hoses commences – Receivers Contractors/terminal operators to complete.
- Once complete all vehicles isolated or removed from the wharf, gates shut and ensure signage is correctly placed – Undertaken by terminal operator's representatives/crew working on the manifold and hoses.
- Prior to the discharge of fuel commencing the wharf shall be inspected by a representative of the PPA, cable ties used to prevent access, a handover checklist will be completed, and a copy provided to the terminal operators/receiver.

7.3 Set up Complete

The berth is expected to be completely set up including hose connected to manifold, prior to the vessel coming alongside.

Any exception to this needs to be prior arranged and approved by PPA and the terminal.

8. BUNKER DELIVERY BY ROAD/PIPELINE

Delivery of bunkers via a road tanker can occur on Berth 1,2 or 3. Delivery of bunkers via a fixed line via terminal pump and hose can be undertaken on berths 1, & 3 only. Vessels will request, through their agent, that bunkers are required. Actions to be taken include;

- Agent to co-ordinate the most appropriate time for the bunkers to be delivered, consideration must be given to the cargo being loaded/discharged.
- NB Bunkering at any of the public berths will not be undertaken during Ammonium Nitrate loading or discharge operations at berth No.2,
- Co-ordination will involve liaison with Landside Operations, Shipping, and the Stevedores for available berth time and space.
- Please note that only those companies that hold a PPA licence to bunker fuels are permitted to undertake bunker operations within the port.

The procedure for safe operation of transferring bunkers is:

- Prior to commencing,
 - Notify the PPA Tower (91739030 or VHF Ch 12) of the intention to commence bunkering a vessel,
 - Safe access on/off the vessel is in place,
 - Shipboard scuppers are plugged

- Ship to shore communications undertaken,
 - Firefighting hoses and equipment on board and ashore (Fuel Trans) are ready for immediate use,
 - Oil spill protection equipment is readily available, via the Fuel Trans response vehicle. Contents are; oil sorbent land booms, oil sorbent pillows, oil sorbent pads, absorbent bags, first aid kit, chemical resistant glove sets, barrier tape, goggles, respirators, particulate respirators, fire blankets, PVC spill mats, overalls, hi-vis vests, rope, witches hats, eye wash bottles, safety torch (intrinsically safe), 9kg extinguisher (dry chemical), danger signs, ER plans, air compressor and Jerry can and fuel.
 - No smoking signs to be in place,
 - 8m exclusion zone established,
 - Naked light restrictions observed,
 - Static control measures implemented,
 - Deck watch in place
- Upon completion,
 - Notify the PPA Tower of the completion of bunkering operations
 - Return all equipment to its normal stowage,
 - Remove any rubbish from the wharf.

9. EMERGENCY RESPONSE

The PPA does not have an emergency response team and relies exclusively on the Department of Fire and Emergency Services (DFES) to react to fire incidents at the port.

Hand held firefighting equipment is located at the manifolds and is augmented by two fire skids fitted with monitors and a booster pump that can deliver foam/water at 28lts per second. Additionally, two break glass alarm activation systems are located next to the fire water stand pipe.

In the event of a fire, Shore officers undertake an assessment of the fire, its location, size and then evaluate their ability to safely attack the fire with the available equipment. If their assessment is that the fire is beyond their capabilities, and they believe that it is unsafe to remain on the wharf, then an evacuation is to be undertaken.

Appendices 4, 5 and 6 consist of flow charts that are designed to assist in decision making when confronted with;

- A fire on-board the tanker,
- A fire on the wharf deck with a tanker alongside and discharging fuel products, and
- A fire on a vessel berthed at PH No.2 when a tanker is alongside PH No.1 and is discharging fuel products.

10. BERTH ACCESS DURING TANKER OPERATIONS

In accordance with the provisions of AS 3846 – 2005 article 8.3.6 and 8.3.7, when vessels engaged in the discharge of flammable liquids are alongside, an exclusion zone will be implemented.

The perpendicular exclusion zone for Berth 1 extends from the berth face up to the eastern rail of CV05 and 25m to seaward of the ship.

Please refer to the map at Appendix 2 for more specific information.

Once the berth has been established, all personnel (except for Authorised Officers, as listed below), regardless of purpose or duration of stay must sign in through the terminal operator's watchperson station, providing the following information:

- Name
- Company they represent
- Full MSIC number
- Purpose of visit
- Time in
- Time out
- Checked for ignition sources

The watchperson will then conduct a check of ignition sources and PPE and when he/she is satisfied that all requirements have been met, admit access to the wharf.

Ship's crew are to identify themselves to the watchperson, who will check their details against the crew list as provided by the ship's agent.

Should a person who is not the holder of a current, valid MSIC requires access to the berth that person must provide his/her PPA induction card number and also the name of the person (Must hold a valid MSIC) who will be accompanying him/her at all times while on the berth (Land-side Restricted Zone).

Authorised Officers such as Border Force (B.F.) and WA Police may carry a firearm in accordance with their operational requirements and are not required to surrender any firearm.

Authorised Officers such as Biosecurity, WA Police and B.F. are not required to provide MSIC details, however they must comply with PPE requirements:

- They must switch phone off prior to boarding the vessel.
- They are informed that they cannot switch their phone on until they arrive at the safe area within in the vessel superstructure.
- They are informed that they must switch their phone off prior to leaving the safe area.

B.F. Officers carry intrinsically safe radios and are permitted to retain these on their person, the radios can be identified by:

- All intrinsically safe radios held by customs are painted yellow.
- Only yellow Motorola XTS5000R radios are intrinsically safe.

11. GENERAL PROVISIONS

The watchperson has the right and responsibility to refuse entry to any person not wearing the correct PPE and/or not complying with the sign in process. (Not withstanding B.F. as per pg.8)

Should the ship require the delivery of provisions while the fuel manifold and hoses are still on the berth the delivery must be conducted via a launch service, under no circumstances is lifting of any cargo or provisions to occur over or near the fuel hoses

which are on the wharf. If the ship has a crane mounted behind the super structure this may be used for stores retrieval from the wharf, provided the delivery vehicle does not encroach within the exclusion zone outlined in point 4.

Third party access (people not directly involved in the operation) to the berth during the operation must be through consultation with PPA and the receivers. PPA staff and security personnel maintain access in accordance with their duties.

Hot works or any work involving electrical equipment, or which may pose a risk of creating a spark is not permitted within the exclusion zone/controlled area at any time while they are on the berth (see controlled area diagram at appendix 2 and 3).

Should fuel ships be scheduled in succession the berth may remain in readiness provided that a trained watchperson attends all times.

In circumstances where the control of the wharf concerned has not been allocated to another port user prior to the three-hour preparation window, the fuel hoses may be connected into standard operational lengths without the provision of a watchperson or the installation of safety and firefighting equipment, provided the area is delineated using cones, tape and information tags.

Under no circumstances is the manifold to be installed, connected or placed on the wharf prior to the installation of the safety and firefighting equipment outlined in Section 4, and a watchperson must also be in attendance.

12. PACK UP OF FUEL TANKER BERTH

Following the sailing of a fuel ship the following sequence is to be observed when packing the equipment away:

- **Step 1:** Once it has been confirmed that hoses are empty and fully drained. Fuel hoses and manifold to be disconnected and removed from the port – Receiver/terminal operator's representatives to complete.
- **Step 2:** All remaining equipment associated with discharge to be removed from the port – Receiver/terminal operator's representatives to complete.
- **Step 3:** Pack up watchperson station, manning no longer required – Stevedores/terminal operator's representatives to return all equipment (including bins) to the correct storage locations. Absorbent socks are to be returned to the storage cradle.
- **Step 4:** Firefighting equipment to be checked for damage and returned to designated storage – PPA maintenance.
- **Step 5:** Southern and northern gates to be opened and have signage removed – PPA maintenance.
- **Step 6:** Power to be reconnected to wharf and ship loaders – PPA to arrange Wharf 1, PPA will reconnect power to Berth 3, Rio Tinto Dampier Salt will reconnect power to Number 3 Ship loader as their operations require. All locks and tags must be removed.

Following the completion of steps 1 and 2 the succeeding actions may be conducted concurrently.

13. PROCESS OWNER

Date approved: 07/04/2022

Review date: 07/04/2023

Version: 17.2

Approved by: GM Terminal Operations

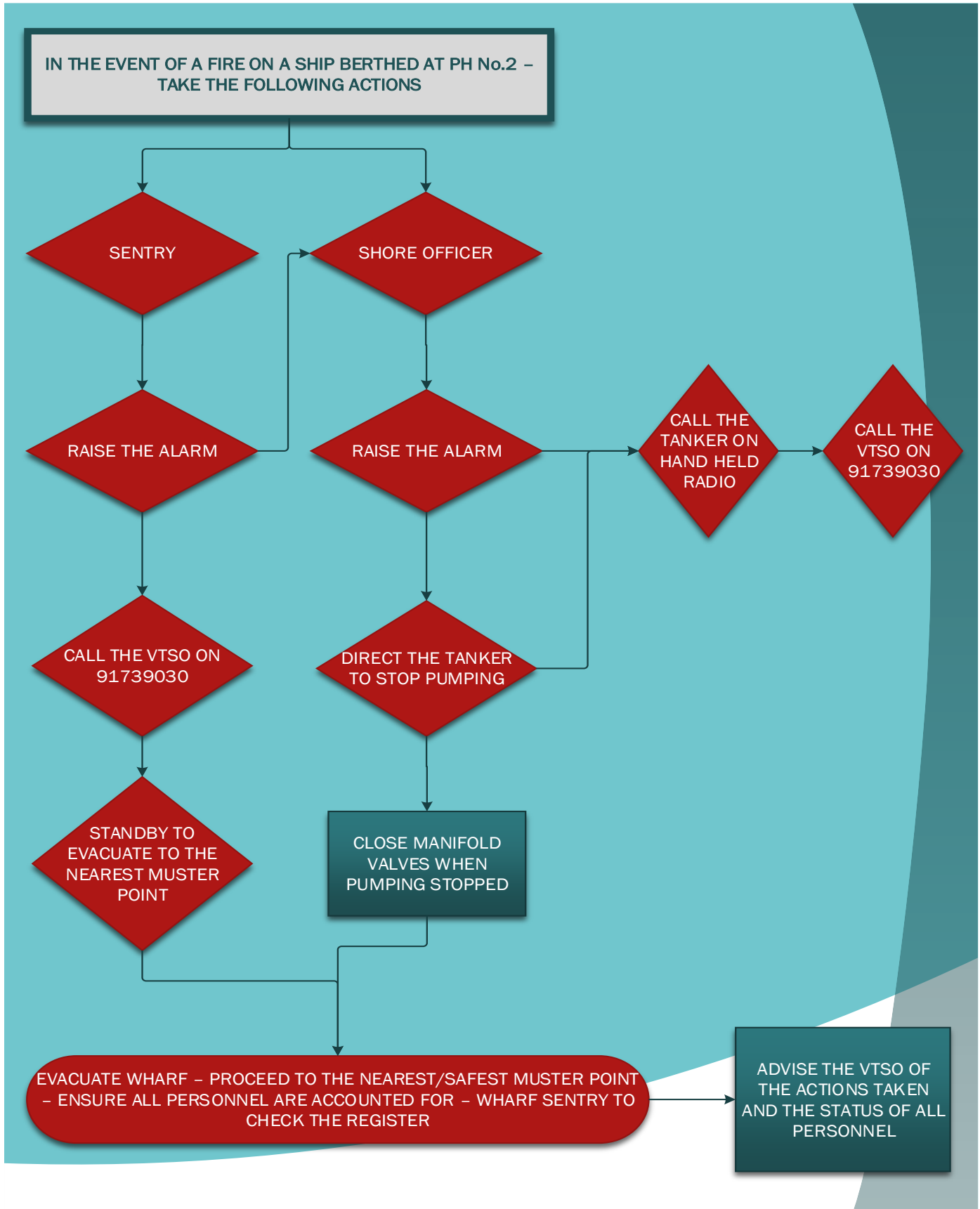
14. APPENDIX 1 – HAZARDOUS AREAS CLASSIFICATION BERTH



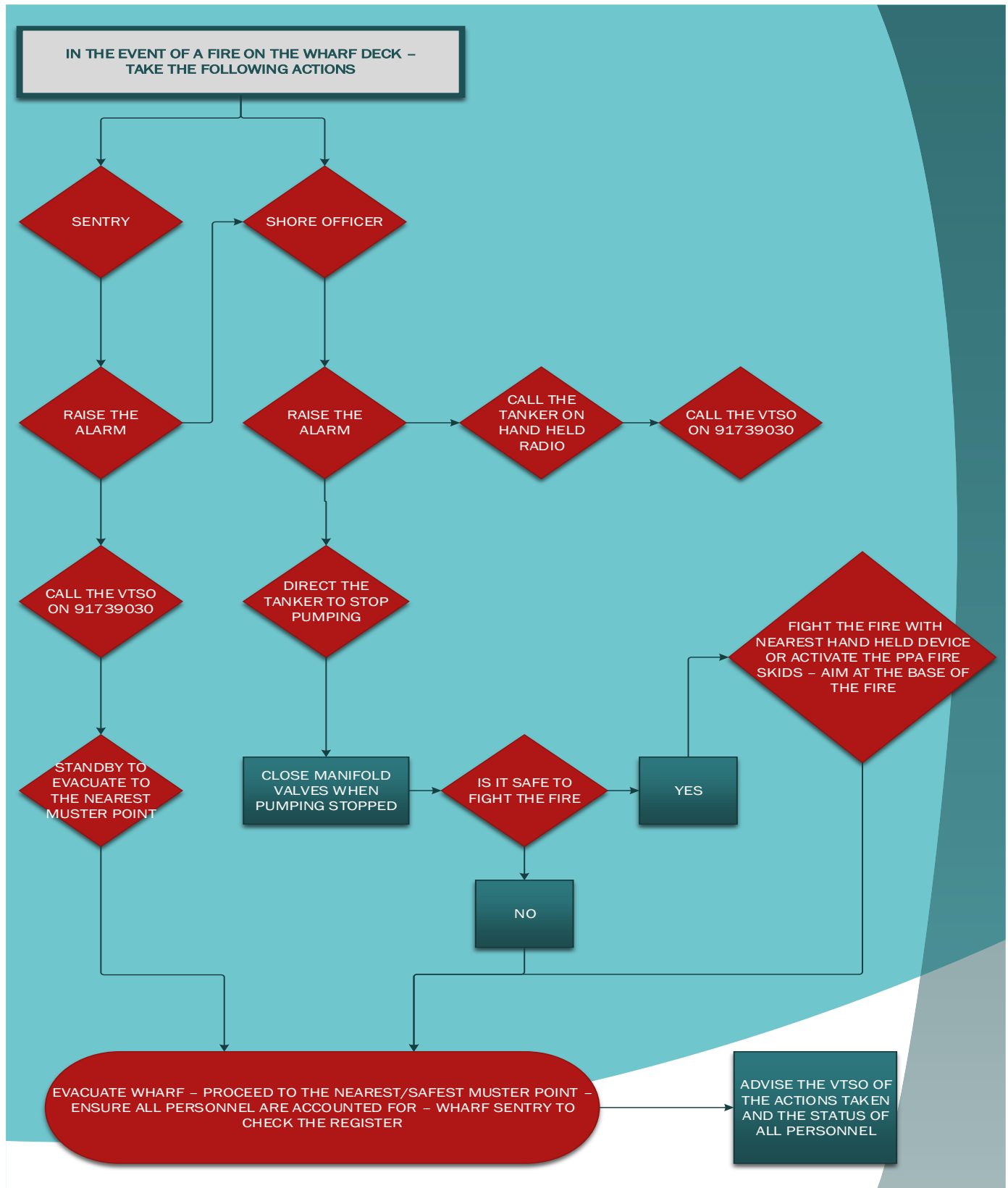
15. APPENDIX 2 - HAZARDOUS AREAS CLASSIFICATION BERTH



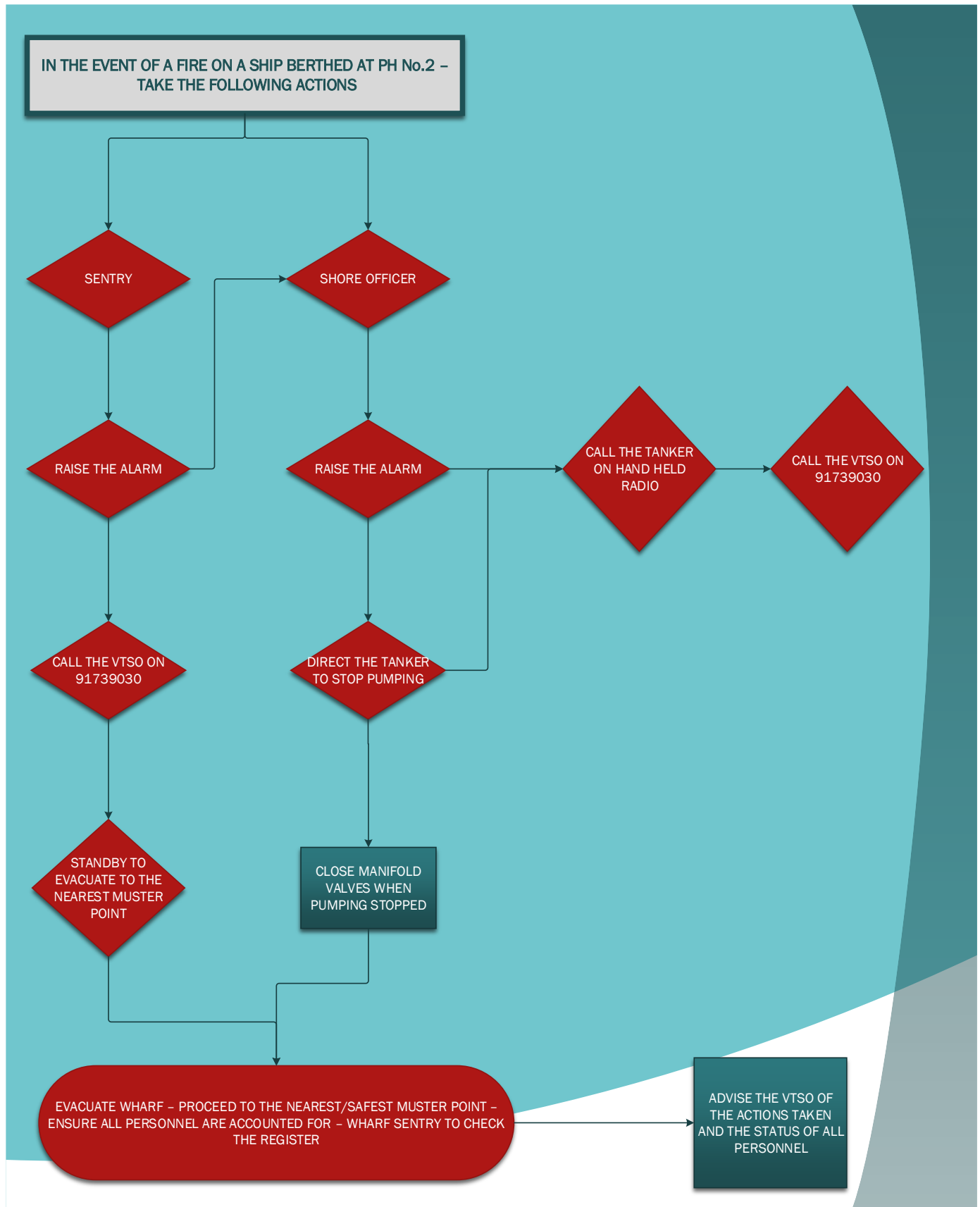
16. APPENDIX 3 – A FIRE ON BOARD A TANKER



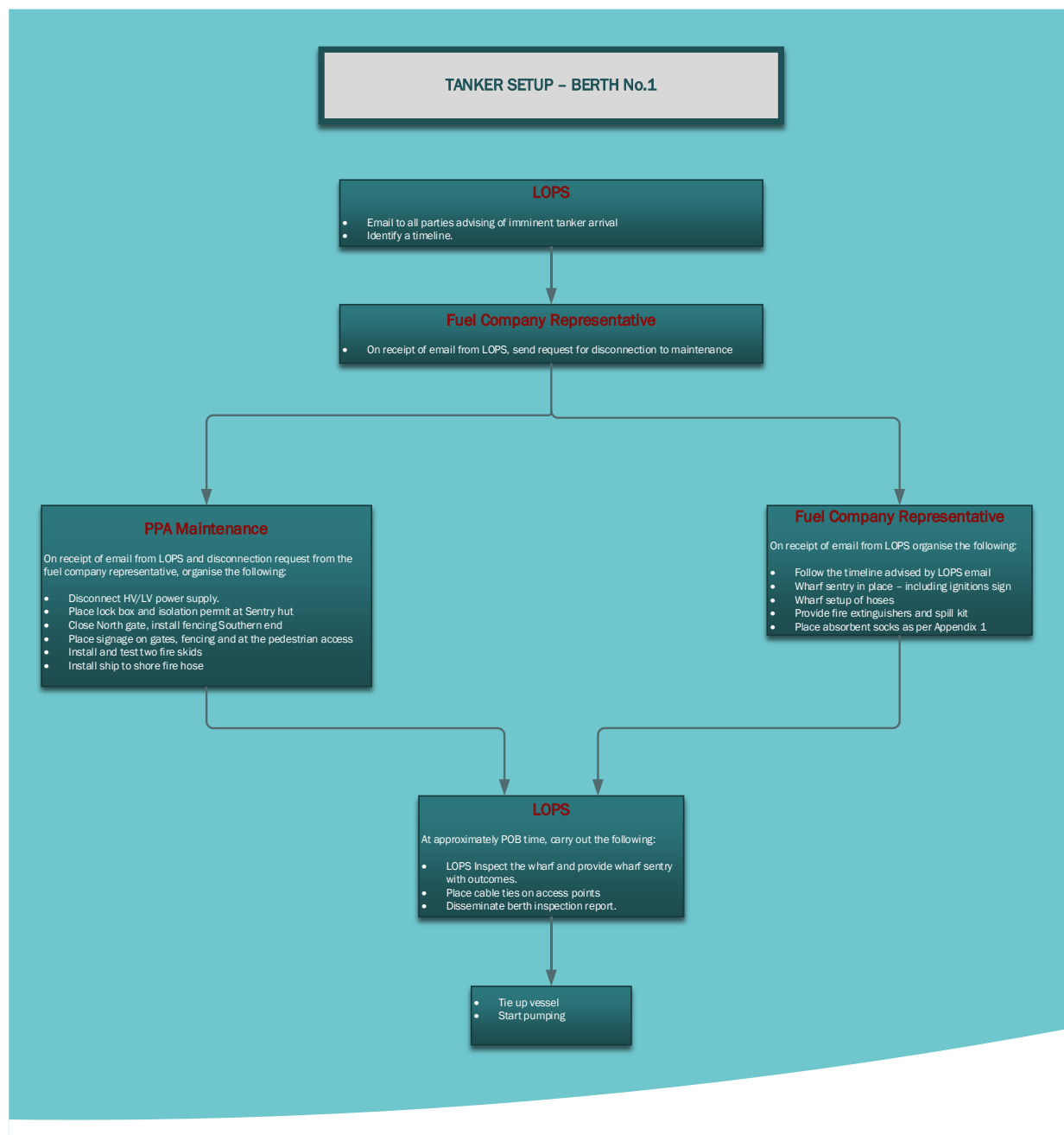
**17. APPENDIX 4 - A FIRE ON THE WHARF DECK WITH A TANKER ALONGSIDE AND
DISCHARGING FUEL PRODUCTS**



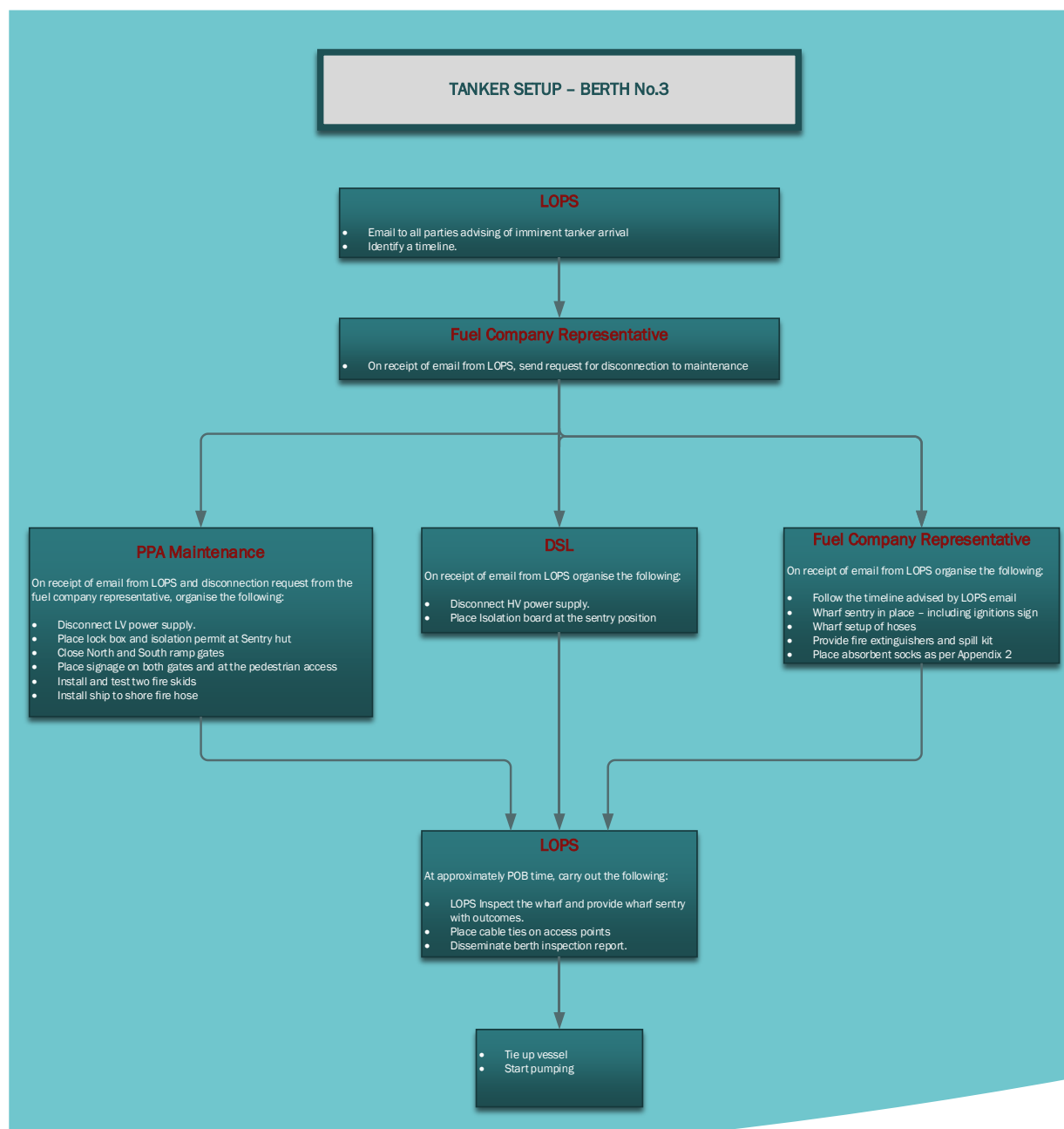
**18. APPENDIX 5 - A FIRE ON A VESSEL BERTHED AT PH NO.2 WHEN A TANKER IS
ALONGSIDE PH NO.1 AND IS DISCHARGING FUEL PRODUCTS.**



19. APPENDIX 6 – TANKER ON BERTH NO.1 SETUP FLOW CHART



20. APPENDIX 7 – TANKER ON BERTH NO.3 SETUP FLOW CHART



21. APPENDIX 8 – TANKER SAFETY SECURITY BERTH INSPECTION FORM

**PORT OF PORT HEDLAND -
TANKER SAFETY & SECURITY
BERTH INSPECTION FORM**



FUEL TANKER PRE-ARRIVAL CHECKLIST

SAFETY & SECURITY BERTH INSPECTION CHECK LIST	
Vessel Name: _____	
Arrival Date: _____	Products Discharging: _____
BERTH 1	BERTH 3
BERTH ACCESS	
<input type="checkbox"/> North gate closed, Southern end of berth: temporary fence erected <input type="checkbox"/> Signs attached <input type="checkbox"/> Cable tie in place on North gate <input type="checkbox"/> Watchman Station set-up centre access <input type="checkbox"/> Watchman is in possession of PPA tanker folder <input type="checkbox"/> Advisory signs in place (mobile phones, ignition sources)	<input type="checkbox"/> LRZ gates and alternative access points closed <input type="checkbox"/> Signs attached (LRZ gates) <input type="checkbox"/> Cable ties in place <input type="checkbox"/> Watchman Station set-up centre access <input type="checkbox"/> Watchman is in possession of PPA tanker folder <input type="checkbox"/> Advisory signs in place (mobile phones, ignition sources)
HAZARD CHECK	
<input type="checkbox"/> Berth is clean and clear – free from oil & ignition sources <input type="checkbox"/> Ship loader parked allowing access to both manifolds <input type="checkbox"/> Safety shower tested, cleaned and operational <input type="checkbox"/> Lights operational <input type="checkbox"/> Berth walk (inspection) completed	<input type="checkbox"/> Berth is clean and clear – free from oil & ignition sources <input type="checkbox"/> Ship Loader is parked within blue lines on North of berth <input type="checkbox"/> Safety shower tested, cleaned and operational <input type="checkbox"/> Lights operational <input type="checkbox"/> Berth walk (inspection) completed
FIRE SAFETY	
<input type="checkbox"/> International house coupling connected land-side <input type="checkbox"/> Not to be charged – fuel company responsible for ship connection Foam skid setup: <input type="checkbox"/> Lines charged <input type="checkbox"/> Skid no. 1 – Monitor locked and directed to ship's hull <input type="checkbox"/> Skid no. 2 tested - Monitor locked and directed to landside manifold <input type="checkbox"/> Check compressor gauge for pressure Other: <input type="checkbox"/> Emergency contact numbers available and visible <input type="checkbox"/> Dry powder extinguishers located within 3 metres of the manifold <input type="checkbox"/> 2 x 9kg <input type="checkbox"/> 2 x 100kg <input type="checkbox"/> Fire extinguisher testing up to date	<input type="checkbox"/> International house coupling connected land-side <input type="checkbox"/> Not to be charged – fuel company responsible for ship connection Foam skid setup: <input type="checkbox"/> Lines charged <input type="checkbox"/> Skid no. 1 – Monitor locked and directed to ship's hull <input type="checkbox"/> Skid no. 2 tested - Monitor locked and directed to landside manifold <input type="checkbox"/> Check compressor gauge for pressure Other: <input type="checkbox"/> Emergency contact numbers available and visible <input type="checkbox"/> Dry powder extinguishers located within 3 metres of the manifold <input type="checkbox"/> 2 x 9kg <input type="checkbox"/> 2 x 100kg <input type="checkbox"/> Fire extinguisher testing up to date

PORT OF PORT HEDLAND – BULK LIQUID TRANSFER PROCEDURE



PORT OF PORT HEDLAND - TANKER SAFETY & SECURITY BERTH INSPECTION FORM



BERTH 1		BERTH 3	
ELECTRICAL ISOLATION			
<input type="checkbox"/> High Voltage disconnection completed. <input type="checkbox"/> Lock box at sentry <input type="checkbox"/> Check paper work		<input type="checkbox"/> High Voltage disconnection completed. <input type="checkbox"/> DSL lock box at sentry <input type="checkbox"/> PPA lock box at sentry <input type="checkbox"/> Check PPA paper work	
SPILL MANAGEMENT			
<input type="checkbox"/> PPA spill bins at least ¾ full & on site <input type="checkbox"/> Fuel company has at least 1 x spill kit			
GENERAL			
<input type="checkbox"/> Personnel present are wearing mandatory PPE – safety glasses, hard hat, high visibility clothing (long sleeves, long pants), safety footwear			
NOTES / OBSERVATIONS			
PPA REPRESENTATIVE		RECEIVERS REPRESENTATIVE	
Name:		Name:	
Signature:		Signature:	

When completed, this form is to be emailed by Landside Operations to Atom or Ampol (or both) and Qube. A copy is also to be saved in Objective.

Atom: Brendon.McCarthy@australianterminals.com

Ampol: igarnet@ampol.com.au

Qube: port-hedland.operations@qube.com.au