

## **Port of Ashburton- ACW Dredging Campaign**

**Number: A03/2023 (T)**

**Date: 8/01/2023**

<b>Date of Effect:</b>	<b>8/01/2023</b>
<b>Details:</b>	<b>Port of Ashburton- Capital Dredging and Hydrographic Survey</b>
<b>Former Notice:</b>	<b>N/A</b>
<b>Charts &amp; Publications:</b>	<b>AUS 64 &amp; AUS 69</b>
<b>Further Notice:</b>	<b>Nil – Will be cancelled at the end of this activity</b>
<b>Attachments:</b>	<b>Map of dredging operations, Vessel Details and sailing routes</b>

Port users are advised that dredging and hydrographic survey activities will be undertaken at the Port of Ashburton as depicted (Fig 1). This activity is scheduled to commence from the 09th of January 2023 and expected to take ten(10) weeks. The dredging operation and support activities will be conducted on a 24-hour basis covering the area as Fig 1.

The dredging works will be carried out by the marine assets as per below table:

Vessel Name	Type of Vessel	Function
Ambiorix	Backhoe Dredger (BHD)	Dredging operations
Bhagwan Abrolhos	Multicat	Main Tug
George	Tug	Assist Tug
AOM 14	Spilt Hopper Barge (SHB)	Dredging operations
AOM 15	Spilt Hopper Barge (SHB)	Dredging operations
Edendrach	CTV/Survey Vessel	Survey Support

The sailing routes and holding ground at temporary mooring are depicted in Fig 2 & 3.

The Split hopper barges will be transiting between the dredge location to Spoil Ground C (Fig 2) in a tug and tow arrangement.

These vessels will be Restricted in their Ability to Manoeuvre and will exhibit the appropriate lights and shapes as prescribed under Marine Order 30. They will maintain a listening watch on Marine VHF Ch 14 & 16.

Ashburton VTS will broadcast a Sécurité on VHF Ch14 advising area of operation.

Mariners should navigate with caution in the vicinity of the dredging and support vessels.

*All current local Marine Notices are available on our website: <http://www.pilbaraports.com.au/#marine-notice>*

**Ashburton VTS | Phone: (08) 9159 6556 | [dampier.vts@pilbaraports.com.au](mailto:dampier.vts@pilbaraports.com.au)**

Mariners and other port users are requested to notify the Harbour Master on the discovery of new dangers or suspected dangers to navigation within the Port.

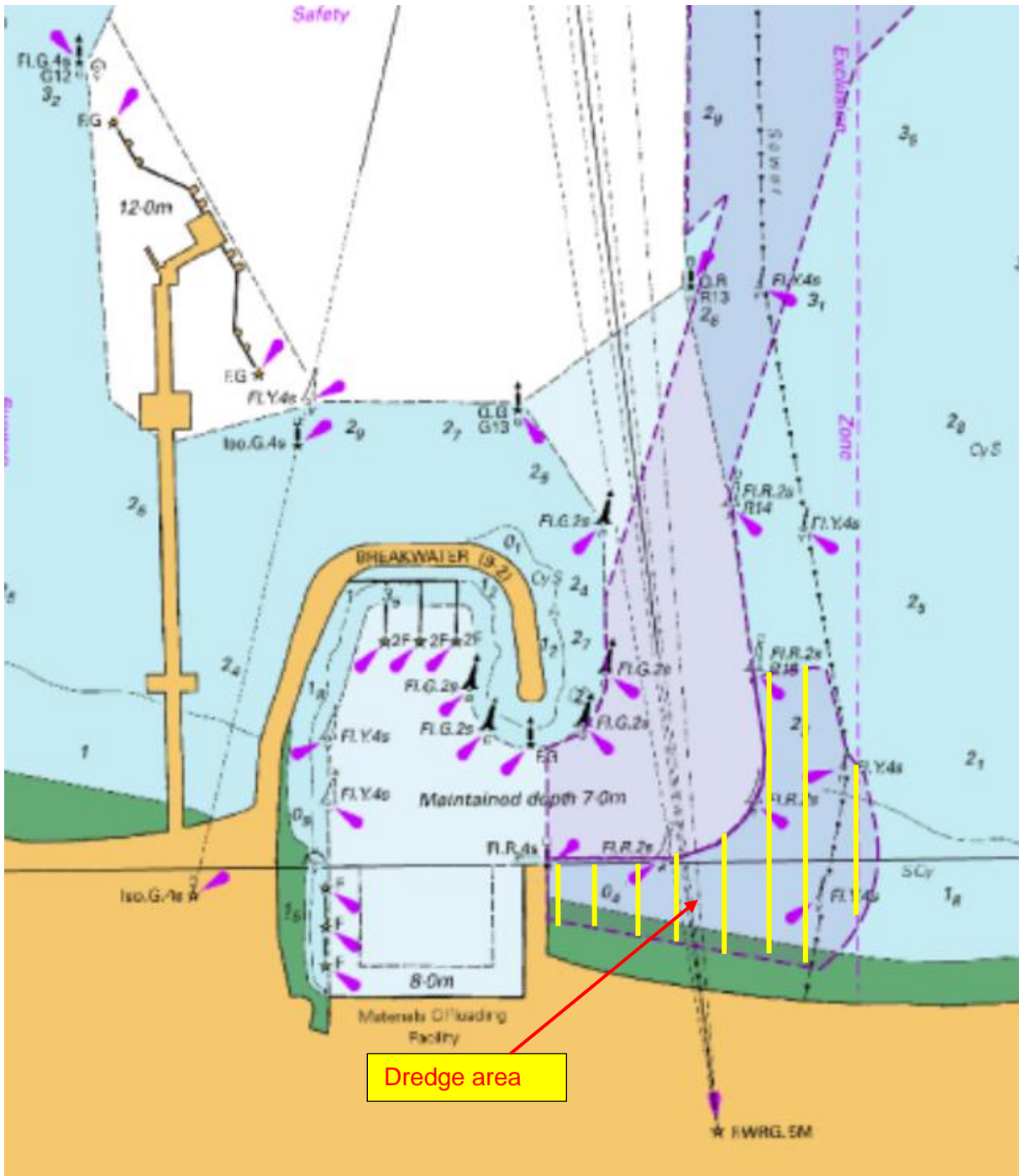
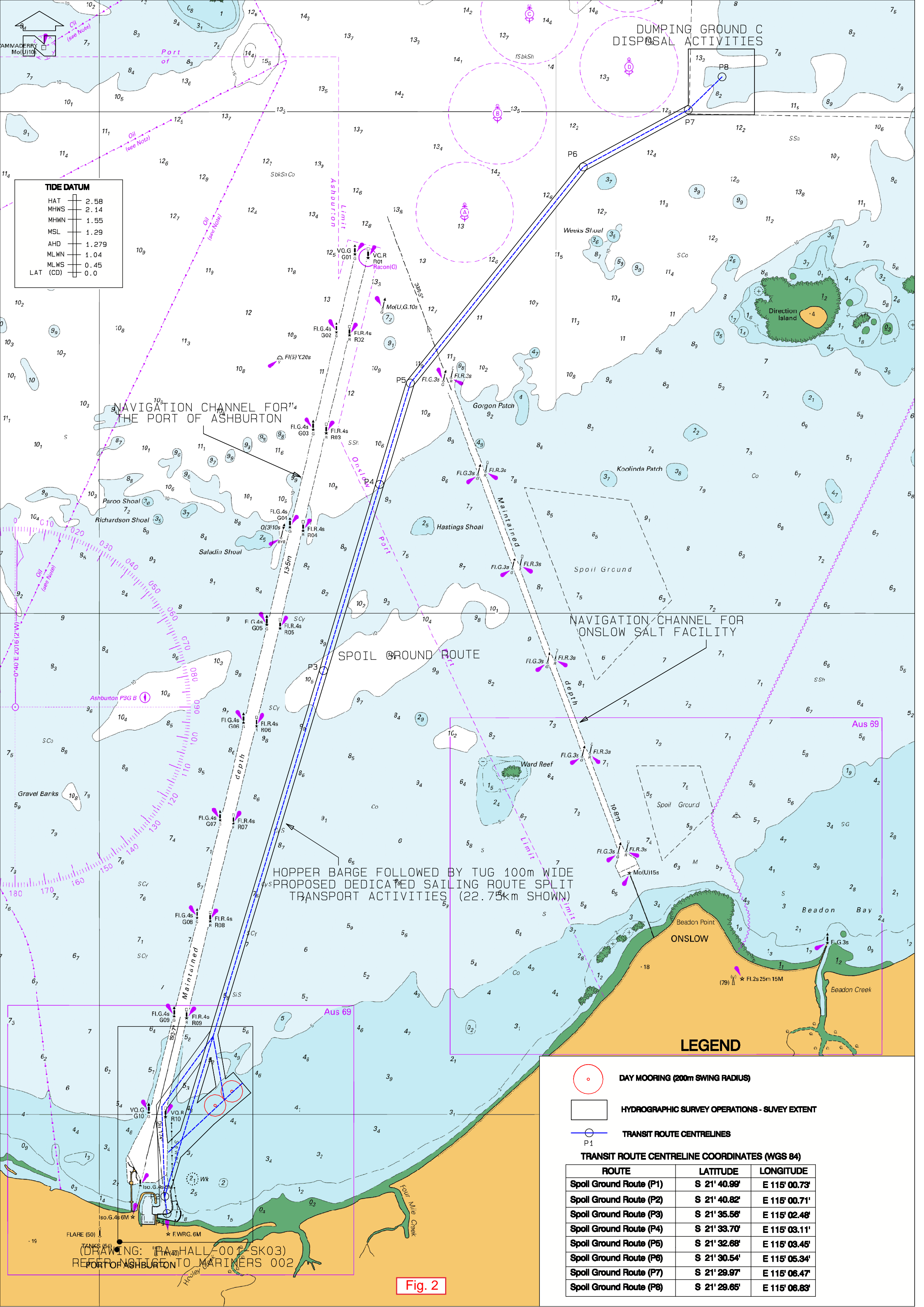


Fig 1

All current local Marine Notices are available on our website: <http://www.pilbaraports.com.au/#marine-notice>

Ashburton VTS | Phone: (08) 9159 6556 | [dampier.vts@pilbaraports.com.au](mailto:dampier.vts@pilbaraports.com.au)

Mariners and other port users are requested to notify the Harbour Master on the discovery of new dangers or suspected dangers to navigation within the Port.



**TIDE DATUM**

HAT	2.58
MHWS	2.14
MHWN	1.55
MSL	1.29
AHD	1.279
MLWN	1.04
MLWS	0.45
LAT (CD)	0.0

NAVIGATION CHANNEL FOR THE PORT OF ASHBURTON

NAVIGATION CHANNEL FOR ONSLOW SALT FACILITY

SPOIL GROUND ROUTE

HOPPER BARGE FOLLOWED BY TUG 100m WIDE PROPOSED DEDICATED SAILING ROUTE SPLIT TRANSPORT ACTIVITIES (22.75km SHOWN)

**LEGEND**

- DAY MOORING (200m SWING RADIUS)
- HYDROGRAPHIC SURVEY OPERATIONS - SUVEY EXTENT
- TRANSIT ROUTE CENTRELINES

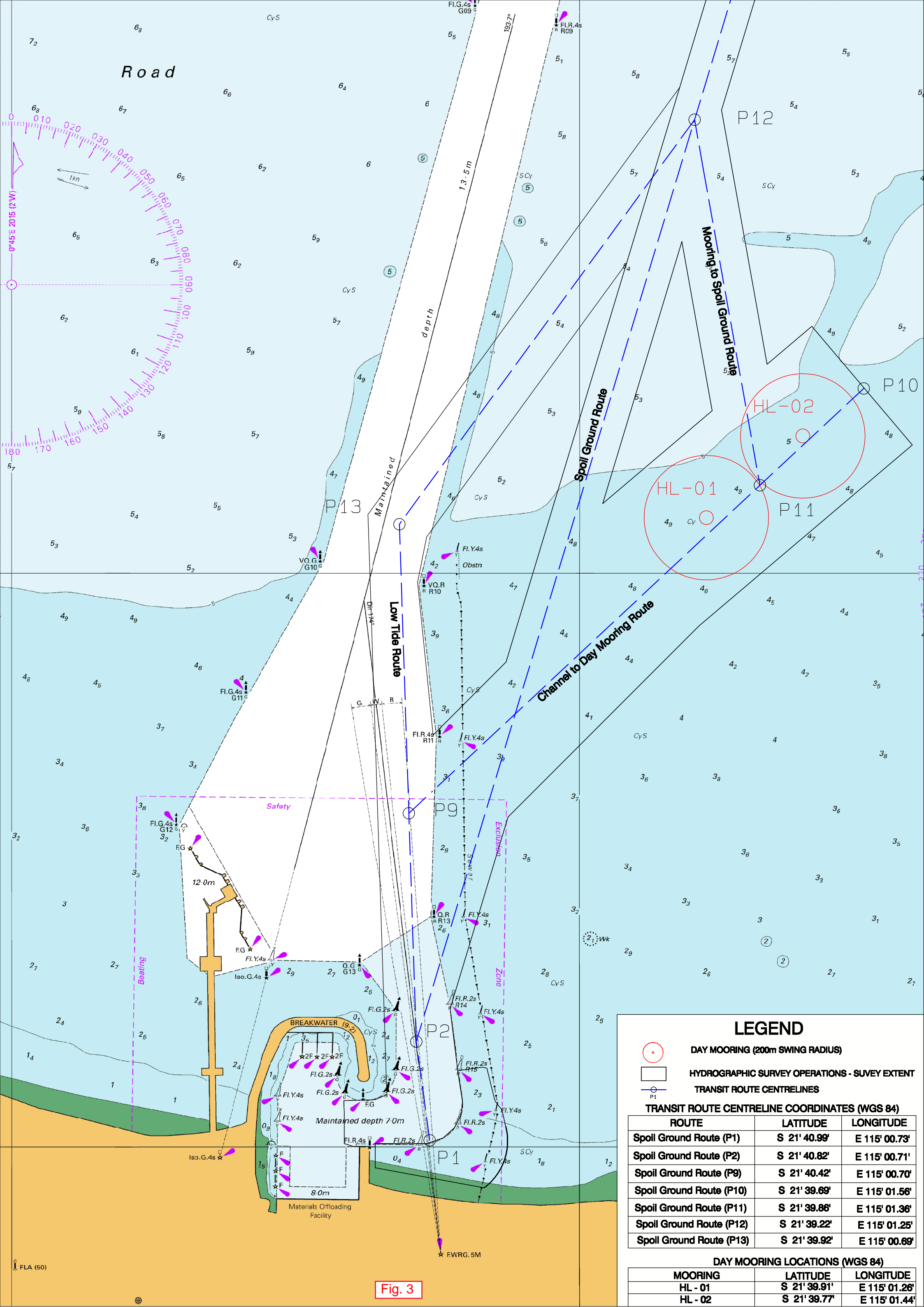
**TRANSIT ROUTE CENTRELINE COORDINATES (WGS 84)**

ROUTE	LATITUDE	LONGITUDE
Spoil Ground Route (P1)	S 21' 40.99'	E 115' 00.73'
Spoil Ground Route (P2)	S 21' 40.82'	E 115' 00.71'
Spoil Ground Route (P3)	S 21' 35.56'	E 115' 02.48'
Spoil Ground Route (P4)	S 21' 33.70'	E 115' 03.11'
Spoil Ground Route (P5)	S 21' 32.68'	E 115' 03.45'
Spoil Ground Route (P6)	S 21' 30.54'	E 115' 05.34'
Spoil Ground Route (P7)	S 21' 29.97'	E 115' 06.47'
Spoil Ground Route (P8)	S 21' 29.65'	E 115' 06.63'

(DRAWING: PA HALL 001 SK03)  
REPORT NO. MARINERS 002

**Fig. 2**





### LEGEND

- DAY MOORING (200m SWING RADIUS)
- HYDROGRAPHIC SURVEY OPERATIONS - SUVEY EXTENT
- TRANSIT ROUTE CENTRELINES

**TRANSIT ROUTE CENTRELINE COORDINATES (WGS 84)**

ROUTE	LATITUDE	LONGITUDE
Spoil Ground Route (P1)	S 21' 40.99'	E 115' 00.73'
Spoil Ground Route (P2)	S 21' 40.82'	E 115' 00.71'
Spoil Ground Route (P9)	S 21' 40.42'	E 115' 00.70'
Spoil Ground Route (P10)	S 21' 39.69'	E 115' 01.56'
Spoil Ground Route (P11)	S 21' 39.86'	E 115' 01.36'
Spoil Ground Route (P12)	S 21' 39.22'	E 115' 01.25'
Spoil Ground Route (P13)	S 21' 39.92'	E 115' 00.69'

**DAY MOORING LOCATIONS (WGS 84)**

MOORING	LATITUDE	LONGITUDE
HL - 01	S 21' 39.91'	E 115' 01.26'
HL - 02	S 21' 39.77'	E 115' 01.44'

Fig. 3

**Tug 'George'**



**TECHNICAL SPECIFICATIONS**

**BUILT:** Jet Lae, Singapore, 2010  
**HULL:** Steel

**CLASSIFICATION**

**CLASSIFICATION:** DCV 2B  
**FLAG:** AUSTRALIA  
**TRADING AREA:** Within 200nm  
**CALL SIGN:** VNW 6389  
**M&H NUMBER:** V2326  
**DECK AREA:** 25m<sup>2</sup>  
**OFFICIAL NUMBER:** 861208

**DIMENSIONS**

**LENGTH:** 15m  
**BREDTH:** 8m  
**DEPTH MOULDED:** 3m  
**GRT:** 88t  
**NET:** 112t  
**DEAD WEIGHT:** 27t  
**DECK STRENGTH:** 10t/m<sup>2</sup>

**MACHINERY**

**PROPULSION:** Twin Screw  
**MAIN ENGINES:** 2x Cummins Kts 19

**TOTAL POWER (kW):** 2x 477kW @ 2100rpm  
**GEAR BOX:** 2x MGx5170Dc  
**GENERATOR:** 1x ISUZU 4le1tygv01  
1x Kohler 25efozd

**SPEED AND CONSUMPTION**

**FULL OPERATION:** 10kts @ 190L/hr  
**ECO OPERATION:** 8kts @ 140L/hr  
**IN PORT:** 300L/day  
**BOLLARD PULL:** 14.8t

**CAPACITIES**

**FUEL:** 33m<sup>3</sup>  
**WATER:** 12.9m<sup>3</sup>  
**SULLAGE:** 2.6m<sup>3</sup>  
**WATER BALLAST:** N/A  
**LUBE OIL:** N/A  
**DIRTY OIL:** 2m<sup>3</sup>  
**CLEAR DECK:** 25m<sup>3</sup>  
**MAX DECK CARGO:** N/A

**CARGO DISCHARGE PUMPS**

**FUEL:** N/A  
**FRESHWATER:** N/A

**DECK EQUIPMENT**

**ANCHOR HANDLING**  
**WINCH:** 10t  
**CRANE:** If required

**COMMUNICATIONS EQUIPMENT**

**RADAR SYSTEM:** 1x Furuno Navnet Vx2  
**DEPTH SOUNDER:** 1x Furuno Fcv-620  
**GPS:** 1x Furuno Navigator Gp 32  
**COMPASS:** 1x Saura Keiki t 15011f  
**CHART PLOTTER:** 1x Maxsea  
**HF RADIO:** 1x JRC Jsb 196  
**VHF RADIO:** 1x SSb MF/HF

**MISCELLANEOUS EQUIPMENT**

**AUTOPILOT:** 1x Coursemaster Cm880  
Medivac Stretcher  
Sewage Treatment Plant (MARPOL Compliant)

**ADDITIONAL DETAILS**

**BERTHS:** 4 (Including Crew)  
**FEATURES:** Fully Air-Conditioned, Galley/Mess, Bridge, Sanitary Facilities (Toilet and Shower), and Saloon Area.

All current local Marine Notices are available on our website: <http://www.pilbaraports.com.au/#marine-notices>

Ashburton VTS | Phone: (08) 9159 6556 | [dampier.vts@pilbaraports.com.au](mailto:dampier.vts@pilbaraports.com.au)

Mariners and other port users are requested to notify the Harbour Master on the discovery of new dangers or suspected dangers to navigation within the Port.



**Multicat 'Bhagwan Abrolhos'**



VESSEL:

**BHAGWAN  
ABROLHOS**

CLASSIFICATION:  
Multicat



**BHAGWAN**  
marine

**TECHNICAL SPECIFICATIONS**

**BUILT:** Neptune Shipyards, Holland, 2012  
**HULL:** Steel

**CLASSIFICATION**  
**CLASSIFICATION:** 2A – Hull Mach Tug, AUT-UMS, Special Service/Multi-Purpose Ship 9653173  
**IMO:** 9653173  
**FLAG:** Australian  
**TRADING AREA:** Unrestricted Navigation  
**CALL SIGN:** VJN3948

**DIMENSIONS**  
**LENGTH OVERALL:** 26.48m  
**BEAM:** 11.0m  
**DEPTH MOULDED:** 3.45m  
**DESIGN DRAFT:** 2.5m  
**GRT:** 255t  
**DEAD WEIGHT:** 215.5t

**MACHINERY**  
**PROPULSION:** Fixed Pitch Propellers & Nozzles  
**MAIN ENGINES:** 2x Cummins QSK38M  
**TOTAL POWER:** 2088kW  
**GEAR BOX:** 2x Masson MMW5200  
**GENERATOR:** 2x Caterpillar C9  
**TOTAL POWER:** 215KVA @ 1500RPM

**SPEED AND CONSUMPTION**  
**FULL:** 10kts @ 1750 RPM 320 L/Hr  
**ECONOMIC:** 8.5kts @ 1400 RPM 160 L/Hr  
**BOLLARD PULL:** 35t

**CAPACITIES**  
**FUEL:** 105m<sup>3</sup>  
**WATER:** 47.5m<sup>3</sup>  
**SEWAGE:** 5.73m<sup>3</sup>  
**LUBE OIL:** 6.5m<sup>3</sup>  
**DIRTY OIL:** 1.8m<sup>3</sup>  
**BILGE WATER:** 8.25m<sup>3</sup>

**CLEAR DECK:** 90m<sup>2</sup>  
**DECK LOAD RATING:** 6t/m<sup>2</sup>

**CARGO DISCHARGE PUMPS**  
**FUEL CARGO:** 35 m<sup>3</sup>/Hr  
**FRESHWATER CARGO:** 35 m<sup>3</sup>/Hr

**DECK EQUIPMENT**  
**TOW WINCH:** 35t, 550m @ 36mm  
**ANCHOR HANDLING WINCH:** 80t, 400m @ 52mm  
**TOW HOOK:** 45t  
**TUGGER:** 15t  
**TOW PINS:** MKB, 172T SWL  
**CHAIN STOPPER:** 100t Hydraulic  
**CRANE AFT:** HEILA HLRM 140-3S @ 26t, 10t @ 12.17m  
**CRANE FWD:** HEILA HLRM 230-4SL @ 24t, 10.3t @16.5m  
**OTHER:** Stern & Bow Roller @100t

**COMMUNICATIONS EQUIPMENT**  
**RADAR SYSTEM:** 1x Furuno Farr – 2xx7 (ARPA & AIS)  
**DEPTH SOUNDER:** 1x Furuno FE700  
**GPS:** 1x Furuno GP150D  
**DGPS:** 1x Furuno DS80  
**COMPASS (MAGNETIC):** 1x Furuno SC50, C&P Type 11  
**CHART PLOTTER:** 1x Max Sea Navigation Computer  
**AIS:** 1x Furuno Universal  
**HF/MF RADIO:** 1x Furuno  
**VHF RADIO:** 2x Sailor 6522 DSC  
**GMDSS:** 1x Furuno Navtex NX70  
2x Inmarsat-C Duplication  
1x Thrane and Thrane Satellite phone  
**SAT COMMS:** 1x 1300W  
**SEARCHLIGHT:** 1x 1300W  
**AUTO PILOT:** 1x Sea Pilot 75

**ACCOMMODATION**  
**BERTHS INC. CREW:** 7  
**FEATURES:** Air-Conditioned Galley/Mess & Sanitary Facilities

All current local Marine Notices are available on our website: <http://www.pilbaraports.com.au/#marine-notice>

Ashburton VTS | Phone: (08) 9159 6556 | [dampier.vts@pilbaraports.com.au](mailto:dampier.vts@pilbaraports.com.au)

Mariners and other port users are requested to notify the Harbour Master on the discovery of new dangers or suspected dangers to navigation within the Port.

**Backhoe Dredger 'Ambiorix'**



Specifications			
Built	1995 (conversion 2010)	<b>DIMENSIONS</b>	
Classification Society	Bureau Veritas	Length Overall	50.00m
<b>CAPACITIES</b>		Hull Length	48.00m
Maximum Dredging Depth	18m or 19.5m	Breadth	16.00m
Bucket Capacity	8m <sup>3</sup> , 5m <sup>3</sup>	Depth	3.00m
Fuel Tank	71m <sup>3</sup>	Draft	2.00m
Water Tank	2 x 42m <sup>3</sup>	Beam	16.00m
Digging Force & Breakout Force	526kN / 520kN		
Accommodation	2 pax		
<b>MACHINERY</b>			
Total Installed Power	Excavator: 1500hp (1120kW) – Cummins QSK45		
Deck Cranes	1 x 20t & 1 x 2.8t		
Spud Length	2 x 29m & 1 x 32m		

All current local Marine Notices are available on our website: <http://www.pilbaraports.com.au/#marine-notices>

**Ashburton VTS | Phone: (08) 9159 6556 | [dampier.vts@pilbaraports.com.au](mailto:dampier.vts@pilbaraports.com.au)**

Mariners and other port users are requested to notify the Harbour Master on the discovery of new dangers or suspected dangers to navigation within the Port.

Survey support vessel 'Edendrach'



Specifications			
Power	2 x 140HP (Suzuki)	Length Overall	7.3m
Draught	0.5m	Beam	2.5m
Fuel Tank Capacity	400L		

All current local Marine Notices are available on our website: <http://www.pilbaraports.com.au/#marine-notice>

Ashburton VTS | Phone: (08) 9159 6556 | [dampier.vts@pilbaraports.com.au](mailto:dampier.vts@pilbaraports.com.au)

Mariners and other port users are requested to notify the Harbour Master on the discovery of new dangers or suspected dangers to navigation within the Port.



**Split Hopper Barge 'AOM 14'**



*Anurodh*

Capt Anurodh Prasad  
Harbour Master Ashburton

*All current local Marine Notices are available on our website: <http://www.pilbaraports.com.au/#marine-notices>*

**Ashburton VTS | Phone: (08) 9159 6556 | [dampier.vts@pilbaraports.com.au](mailto:dampier.vts@pilbaraports.com.au)**

Mariners and other port users are requested to notify the Harbour Master on the discovery of new dangers or suspected dangers to navigation within the Port.