

Port of Ashburton – Dredging Campaign 2025

Number: A16/2025

Date: 7/10/2025

Date of effect:	7/10/2025
Details:	Port of Ashburton – Dredging Campaign 2025 including Hydrographic Survey
Former notice:	NA
Charts and publications:	AUS 64, & AUS 69 ENC Cell - AU422114
Further notice:	Notice will be cancelled at the end of the works
Attachments:	Maps of Dredging Operations, and Vessel Details

Mariners are advised that dredging and hydrographic survey activities will be undertaken at the Port of Ashburton. This activity is scheduled to commence on or about the 8th October continuing for a period of up to 10 days.

Maintenance dredging is required within the Wheatstone Marine Terminal (WMT) channel, swing basin and berth pocket to allow for ongoing continuous and uninterrupted operations. Survey will take place in Ashburton Cargo Wharf (ACW) channel, swing basin, berth pockets and Mineral Resources (MRL) berth pocket, subsequent sweeping may be required in these areas as indicated by the attached chartlets.

The dredging vessels will be transiting from the dredge locations to Spoil Grounds B and C, and Holding Grounds G02, R05, and ACW Channel, as depicted in the attached chartlets.

The Vessels involved in the Ashburton 20205 Maintenance Dredging Campaign:

VESSELS NAME	TYPE OF VESSEL	FUNCTION
Nile River	TSHD	Dredging operations
Vantage	Sweep Vessel / Tug / Workboat	Sweeping operations
Puriya	Survey Vessel	Surveying operations

These vessels will be restricted in their ability to manoeuvre and will exhibit the appropriate lights and shapes as prescribed under Marine Order 30. Vessels will maintain a listening watch on Marine VHF Ch 14 & 16. For ease of communications,

the Port's common nomenclature as portrayed on AUS Charts 64 and 69 for areas within the Port shall be used to identify the vessels' working areas.

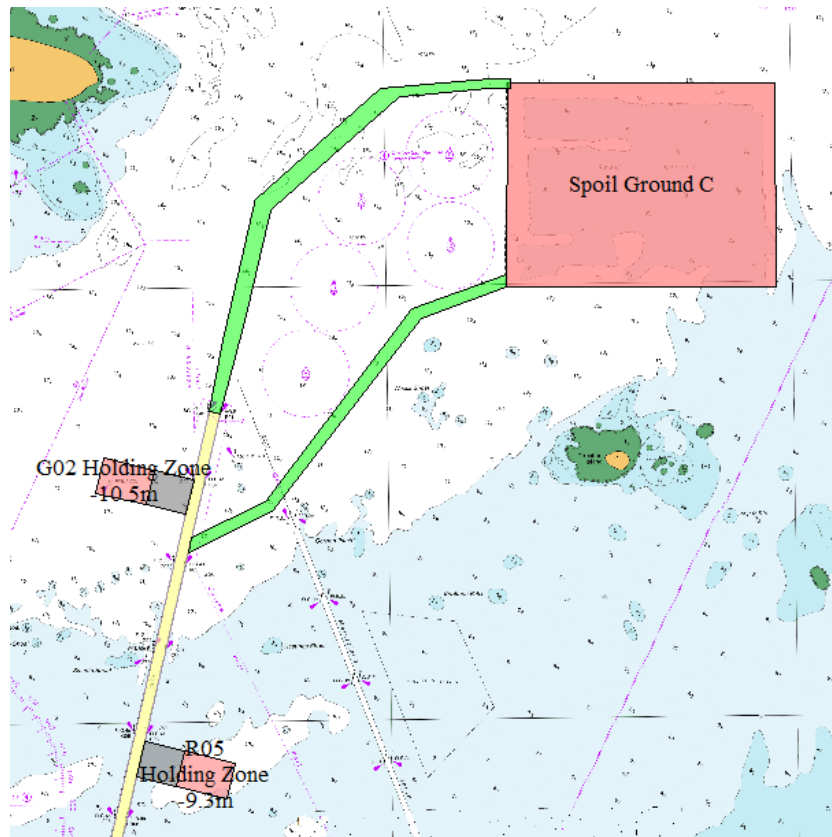
Ashburton VTS will broadcast regular Sécurité messages on VHF Ch 14 & 16 advising the area of operation.

Mariners must navigate with caution in the vicinity of the dredging operations and support vessels.

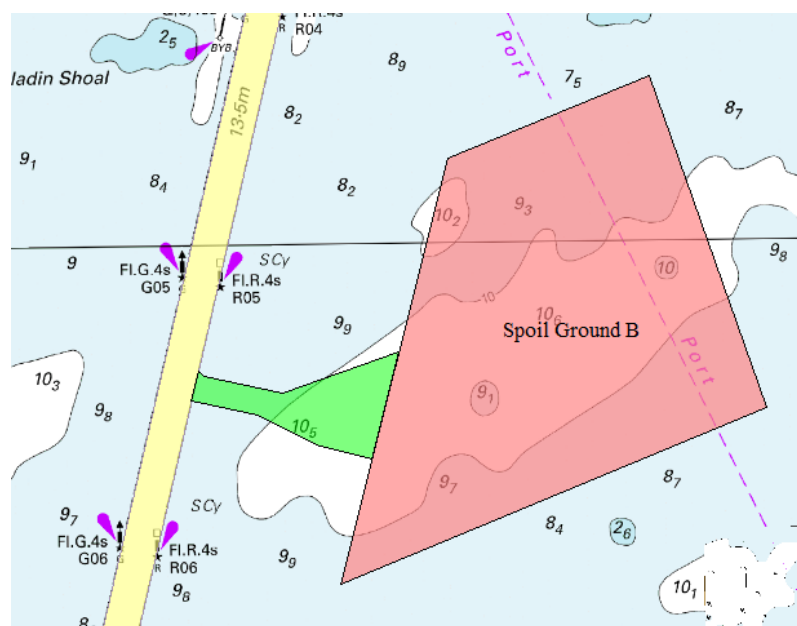
Capt. Mike Minogue
Harbour Master

Dredging Areas, Recommended Routes, Spoil Ground B and C, and Holding Zones

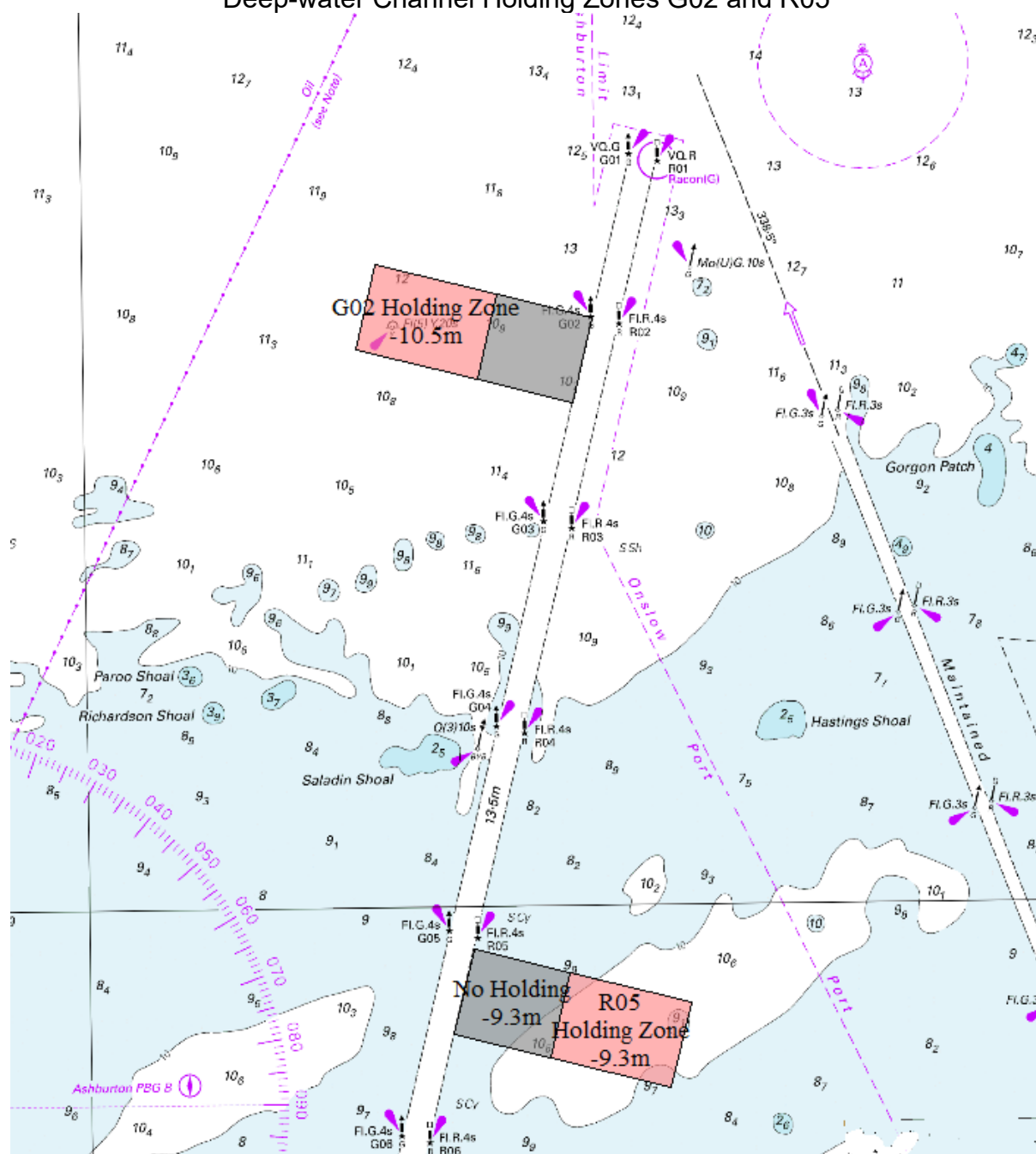
Dredging Areas, Recommended Routes, Spoil Ground C, and Holding Zones G02 and R05



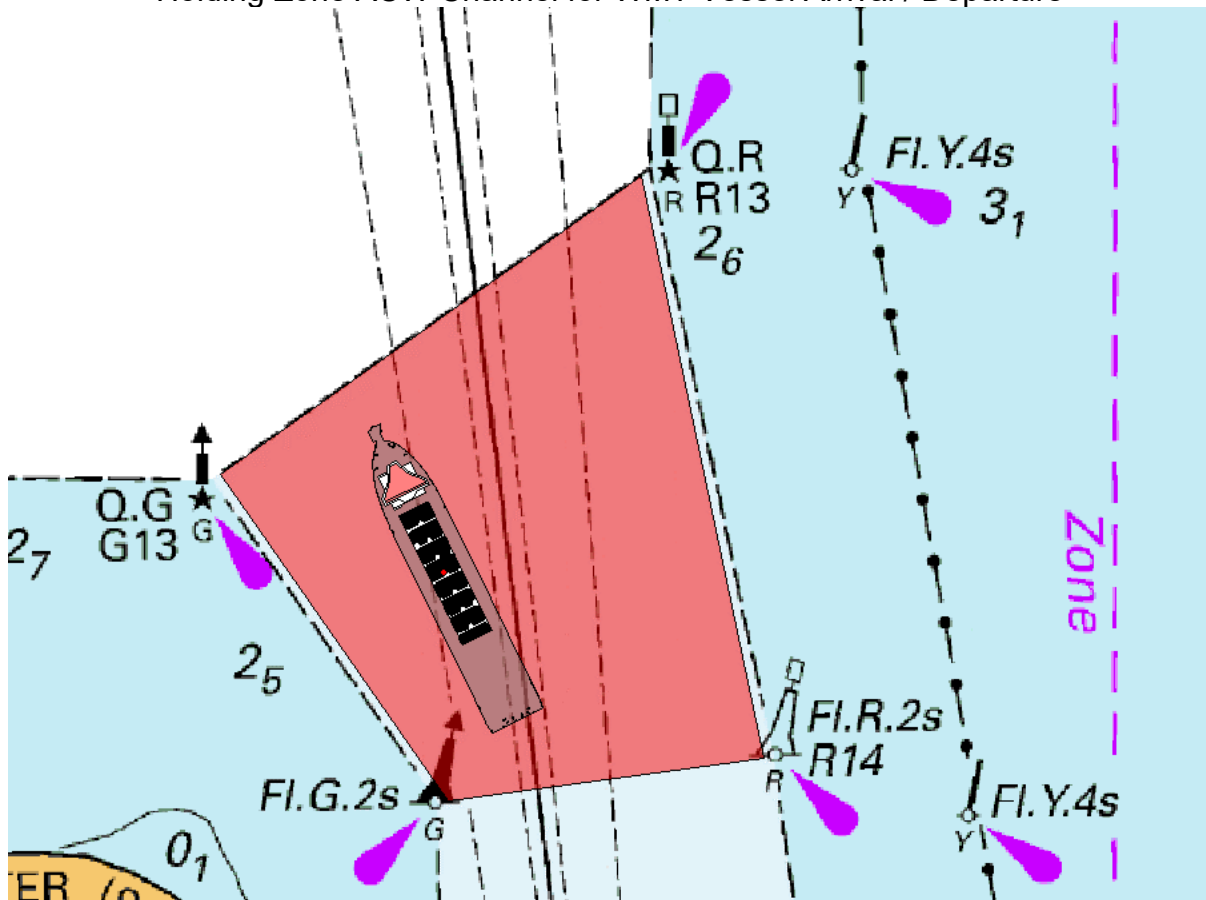
Spoil Ground B



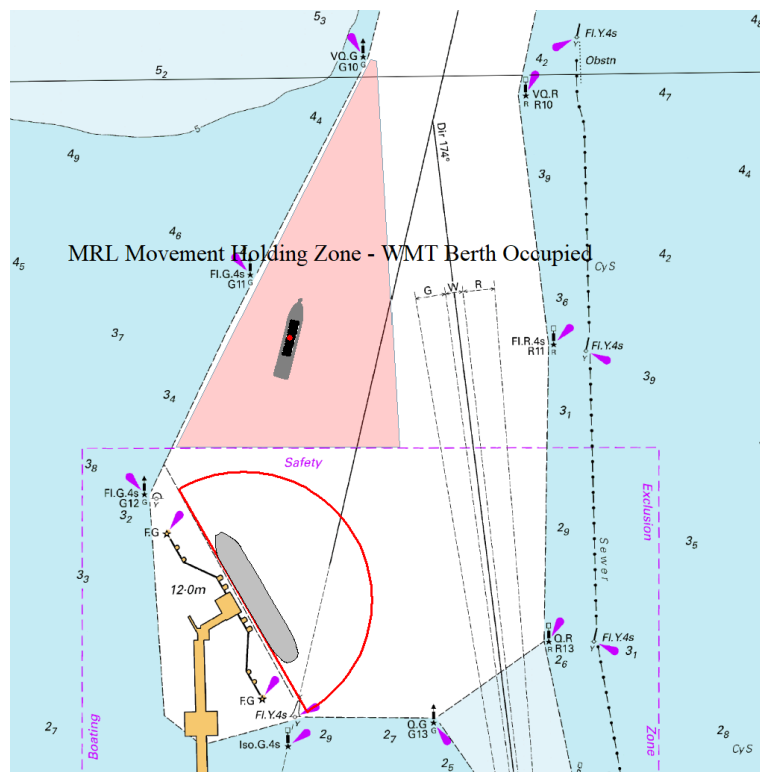
Deep-water Channel Holding Zones G02 and R05



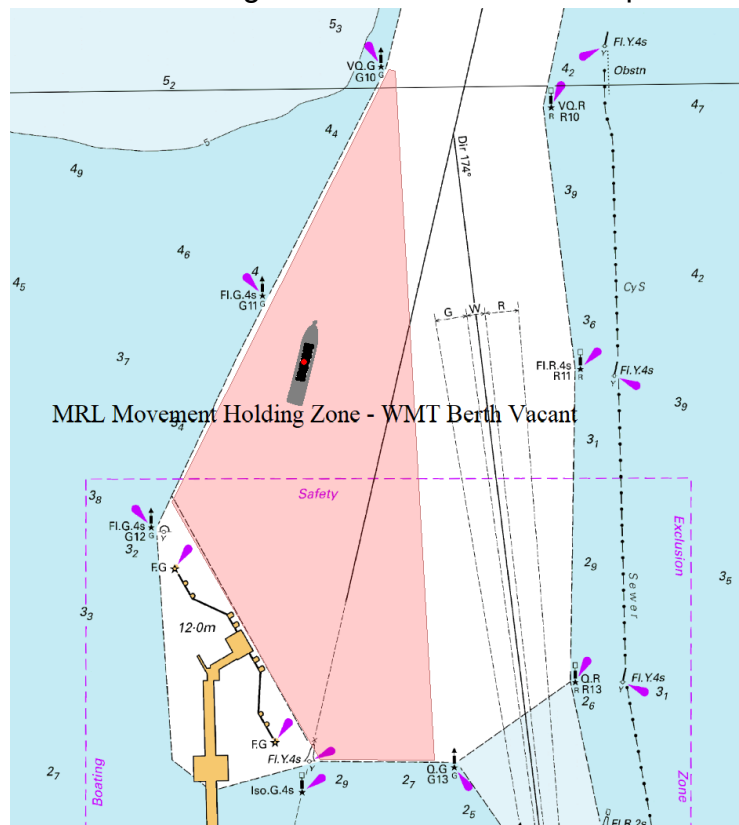
Holding Zone ACW Channel for WMT Vessel Arrival / Departure



MRL Holding Zone when WMT Occupied



MRL Holding Zone when WMT unoccupied

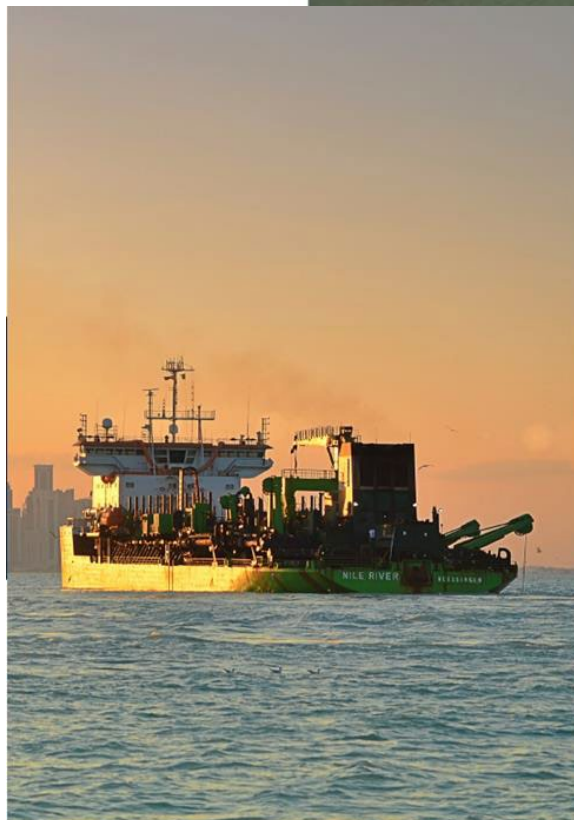


Vessels

TSH Dredger



TRAILING SUCTION
HOPPER DREDGER



Construction year	1999
Length overall	144.00 m
Breadth overall	28.00 m
Depth	11.90 m
Maximum draught (loaded)	10.60 m
Maximum dredging depth	60 m
Hopper capacity to top overflow	16,989 m ³
Suction pipe n°	2 n
Suction diameter	1,200 mm
Discharge pipe diameter	1,000 mm
Speed loaded	15 kn
Propulsion power	17,280 kW
Total installed power	19,559 kW
Total pump power	13,786 kW
Comments	DP/DT System



www.deme-group.com

Sweep Vessel / Tug / Workboat

MTS Vantage

Damen, 2709

Shoalbuster



CLASSIFICATION

CLASSIFICATION: BUREAU VERITAS, HULL / MACH
UNRESTRICTED NAVIGATION. AUT-UMS
IMO: 9585261
FLAG: AUSTRALIAN
TRADING AREA: UNRESTRICTED NAVIGATION
CALL SIGN: VZYO
BUILT: 2011

DIMENSIONS

LENGTH OVERALL: 23.84M
BEAM: 9.1M
DEPTH MOULDED: 3.6M
DESIGN DRAFT: 2.63M
GRT: 221T
NET: 66T

MACHINERY

PROPULSION: 2X SOLID SCREW PROPELLER INOX4
MAIN ENGINES: 2X CATERPILLAR 3512T CA,
12 CYLINDER, 1600RPM
TOTAL POWER (KW): 2x 1118kW
GEAR BOX: 2X REINTJES WAF 664 & #321; /5.9:1.
GENERATOR: 2X DIESEL GENERATORS, 88kVA (70 kW),
400v, 50Hz
BOW THRUSTER: HYDRAULIC 149kW

SPEED AND CONSUMPTION (PERFORMANCES)

FULL OPERATING: 12.5KT
IN PORT: 4L/H
BOLLARD PULL: 40T

CAPACITIES

FUEL: 121.6M³
WATER: 30.1M³
SULLAGE: 2.18 M³
LUBE OIL: 3.9M³
DIRTY OIL: 4.34M³
BILGE WATER: 4.34M³
CLEAR DECK: 41.25M²
DECK LOAD RATING: 15T/M²

CARGO DISCHARGE PUMPS

FUEL CARGO: 32M³/H
FRESHWATER: 32M³/H

DECK EQUIPMENT

TOW WINCH: 64T (1ST LAYER) @ 4M/MIN
ANCHOR HANDLING WINCH: 100T (1ST LAYER) @ 2.5M/MIN
TUGGER: 8T @ 30M
TOW PINS: 3X HYDRAULIC ANCHOR PINS
CRANE: HEILA 140, 4SL SWL 5.30T/18.03M

MISCELLANEOUS EQUIPMENT

FUEL SEPARATOR: GEA WESTFALIA SEPARATOR
ANCHOR: 2X 225KG POOL (H.H.P)
MISC: SURVEY MOON POOL

NAUTICAL & COMMUNICATIONS EQUIPMENT

RADAR SYSTEM: 1X FURUNO FAR 2117 ARPA
DEPTH SOUNDER: 1X FURUNO FE-700 ECHO SOUNDER
GPS: 1X FURUNO GP-150
COMPASS: 1X KOTTER TYPE,
1X GYRO COMPASS
CHART PLOTTER: 2X PC NAV STATIONS
AIS: 1X FURUNO
HF RADIO: 1X FURUNO MF/HF DSC
VHF RADIO: 2X H/H VHF
GMDSS: 1X A3000
SAT COMMS: 1X INMARSAT C / SSB
SEARCHLIGHT: 2X PESCHE 1000W
AUTO PILOT: 3X SAILOR 5822 DSC,
2X H/H VHF SRH NAV-5 NAVTEX

ACCOMMODATION

BERTHS INCLUDING CREW: 7
FEATURES: FULLY AIR-CONDITIONED LIVING
SPACES FOR SEVEN PERSONS,
CONSISTING OF THREE SINGLE &
TWO DOUBLE CREW CABINS,
GALLEY/MESS &
SANITARY FACILITIES.

Geraldton Head Office
154 Connell Rd,
Fisherman's Wharf,
Geraldton, WA, 6530.
Tel: +61 8 9965 9700

Dampier Office
1 Nielsen Place,
Dampier,
WA, 6713.
Tel: +61 8 9144 3300

Brisbane Office
30 Paringa Road,
Murarie,
QLD, 4172
Tel: +61 7 3907 3111

Darwin Office
869 Berrimah Road
East Arm,
NT, 0822
Tel: +61 8 8982 0600

Perth Office
9 Longfellow Court,
Belmont,
WA, 6104.
Tel: +61 8 9424 2300

www.bhagwanmarine.com

THE DATA ON THIS SPECIFICATION IS PUBLISHED IN GOOD FAITH AND FOR GENERAL INFORMATION PURPOSE ONLY.
IT DOES NOT WARRANT ITS ACCURACY OR COMPLETENESS AND TO THE FULL EXTENT ALLOWED BY LAW EXCLUDES LIABILITY.
CHARTER ENQUIRIES CAN BE DIRECTED TO OUR COMMERCIAL DEPARTMENT
PHONE: +61 8 9965 9700 FAX: +61 8 9965 4545 EMAIL: COMMERCIAL@BHAGWANMARINE.COM

Survey Vessel



PURIYA – MAINTENANCE VESSEL



KEY FEATURES

- Comfortable accommodation
- Dry & comfortable ride for passengers
- Economical
- Twin Skeg

VESSEL APPLICATIONS

- Crew - pilot transfers
- Construction & maintenance support
- Navigation aid and maintenance
- Search & rescue
- Security patrol
- Survey - dive support

