

Port of Ashburton – Ploughing Campaign 2026

Number: A13/2026

Date: 09/06/2026

Date of effect:	10/06/2026
Details:	Port of Ashburton – Ploughing Campaign 2026 including Hydrographic Survey
Former notice:	NA
Charts and publications:	AUS 64 / ENC Cell - AU422114
Further notice:	Notice will be cancelled at the end of the works
Attachments:	Maps of Dredging Operations, and Vessel Details

Mariners are advised that ploughing and hydrographic survey activities will be undertaken at the Port of Ashburton. These activities are scheduled to commence on or about **10 June 2026** and continue for a period of up to ten (10) days.

Rectification ploughing will be carried out at the Transshipment Terminal berth pocket and the ACW Channel entrance to support ongoing continuous and uninterrupted operations. Hydrographic survey works will also be conducted, covering all areas of the Ashburton Cargo Wharf (ACW) Channel, swing basin, berth pockets, and the Transshipment Terminal berth pocket.

Dredging vessels will transit over short distances between the ploughing locations and Holding Grounds A and B, as depicted in the attached chartlets.

Vessels involved in the Ashburton 2026 Rectification Ploughing Campaign include:

VESSELS NAME	TYPE OF VESSEL	FUNCTION
SEAHORSE QUENDA	Ploughing Tug	Ploughing operations
AMS 16	Utility Vessel	Crew change
ZEPHYR	Survey Vessel	Surveying operations

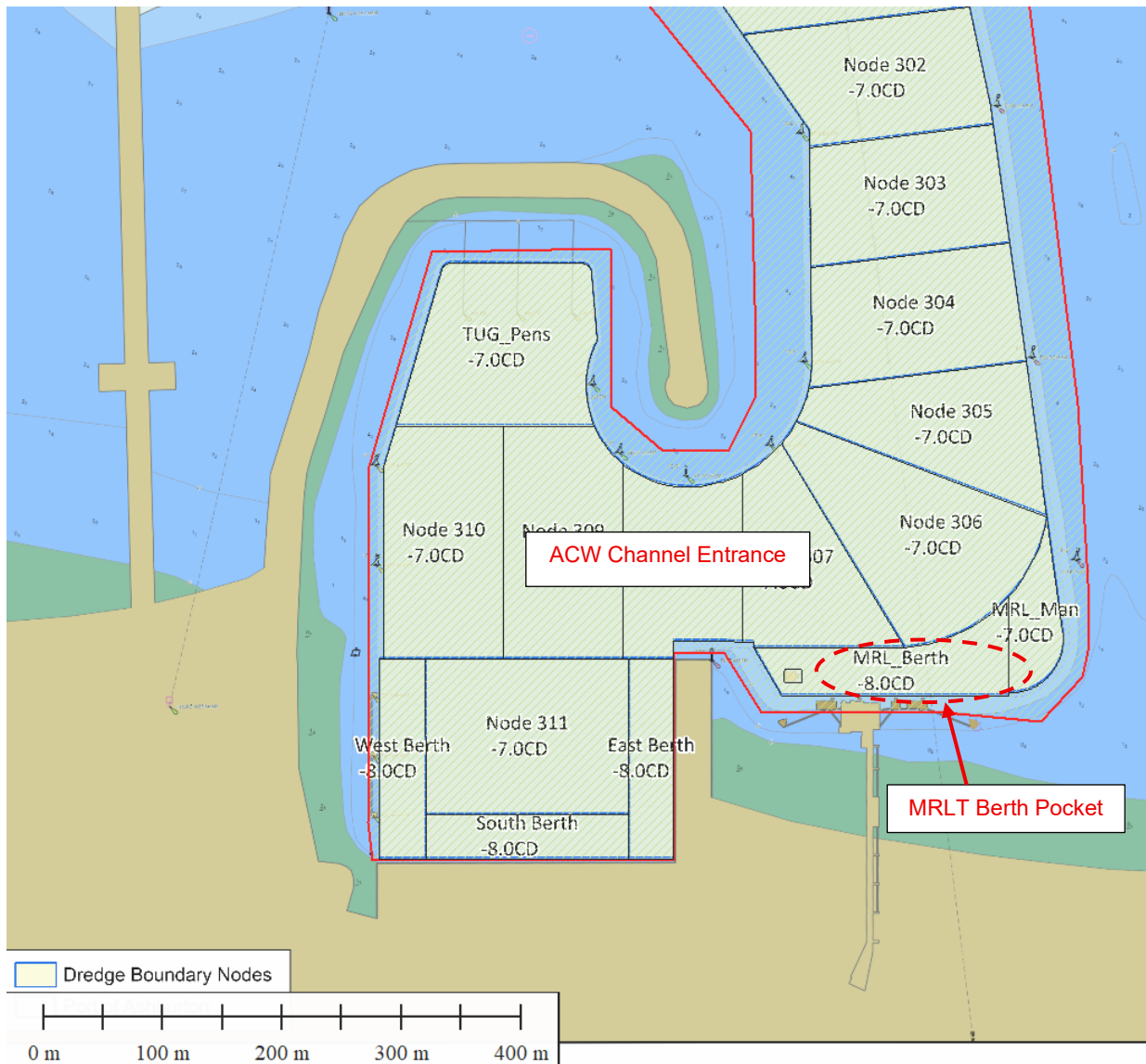
These vessels will be restricted in their ability to manoeuvre and will display the appropriate lights and shapes in accordance with Marine Order 30. All vessels will maintain a continuous listening watch on VHF Channels 14 and 16.

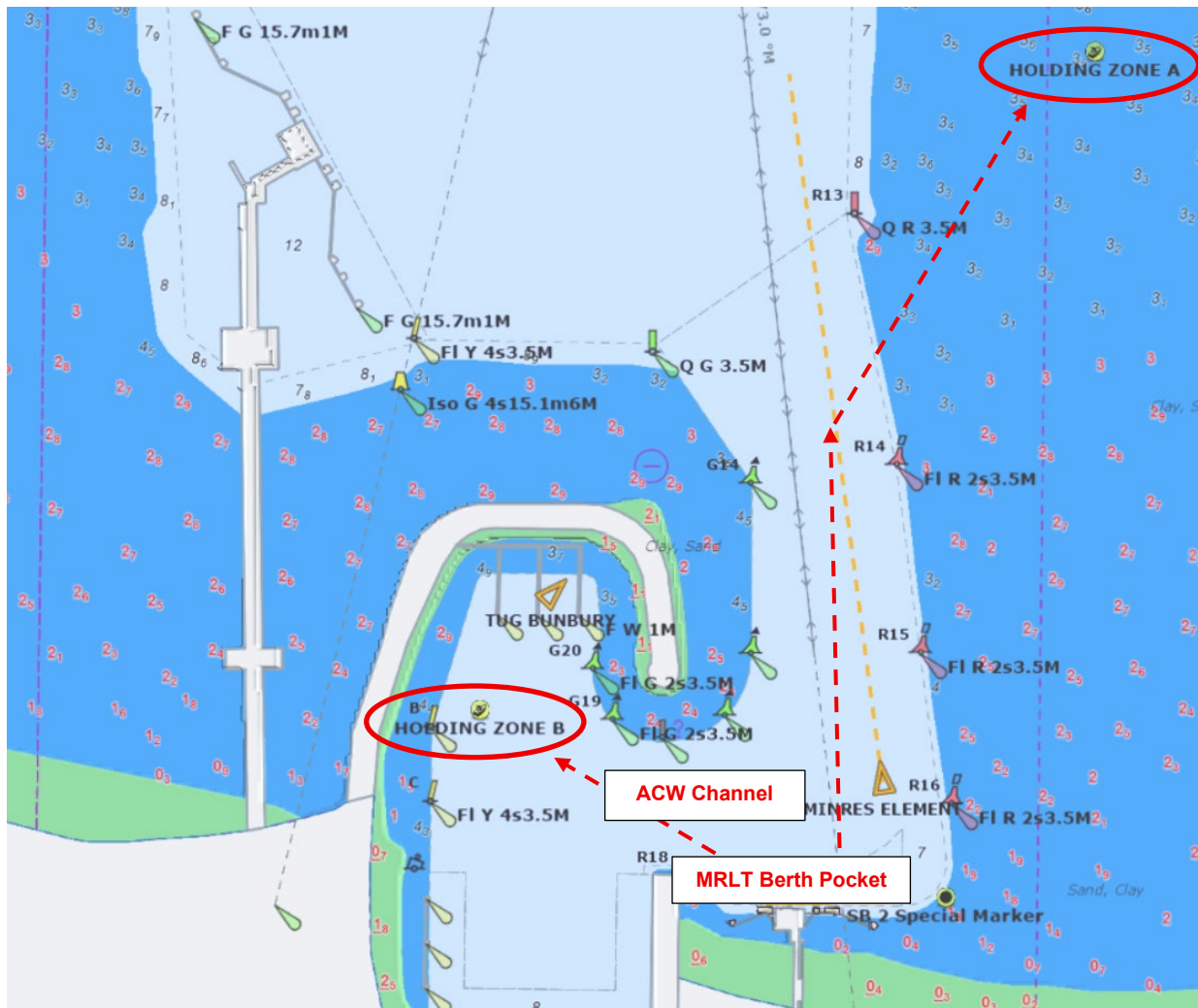
Ashburton VTS will broadcast regular Sécurité messages on VHF Channels 14 and 16 advising of the locations and extent of operations.

Mariners are advised to navigate with caution when in the vicinity of dredging operations and associated support vessels.

Capt. Mike Minogue
Harbour Master

Ploughing Areas (ACW Channel Entrance and MRLT Berth Pocket)





Holding Zone A (-3.5m LAT)

- 21° 40.500' S
- 115° 00.900' E

Holding Zone B (-7.0m LAT)

- 21° 40.900' S
- 115° 00.500' E

Vessels

Plough Tug



OVERVIEW

Versatile all round tug . Ideal economical option for extended ocean tows or shallow draft Project scopes. RTK GPS Ready.Has OVID history.

PRINCIPAL PARTICULARS

Length overall	23.50m	Operational fuel burn	110lt/hr @ 8 Knots
Width	7.32m	Max speed	12Kn sprint
Bollard pull	C Class	Range (25% reserve)	4000Nm
Main engines	Cat 3412	Total power	1450hp
Operating draft	2.40m	Maximum draft	2.80m
Fuel capacity	76m3	FW capacity	13.94m3

SURVEY

Registry	AMSA	Max Crew	5 crew, 10 special pax
Class	2B	Official# / UVI	451986

DECK EQUIPMENT

Tow hook	25t SWL	Recovery winch	10t
----------	---------	----------------	-----

ACCOMMODATION

Berths	1 x dbl, 1 x sgl, 4 x dbl bunks	Features	Air conditioned
--------	---------------------------------	----------	-----------------

Crew Transfer Vessel

AMS 16

UTILITY



VESSEL SPECIFICATION SHEET



OVERVIEW

High speed multipurpose landing craft.

PRINCIPAL PARTICULARS

Length overall	13.1m	Propulsion	2 x Mercury 300hp
Width	5.0m	Cargo capacity	4200kg
Max speed	28Kn	Operational fuel burn	Cargo Dependent

SURVEY

Registry	AMSA	Official/UVI#	466139
Class	2C	Crew	2 crew, 10 pax

OPTIONS

Ideal for multiple operations. Shallow draft with 2.5m x 3.8m long bow ramp for beach landings, cargo hotshots or vehicle transfers. Fitted with a 2500kg @ 1.6m & 630kg @ 5.85m Hiab. Airconditioned cabin with seated crew transfer. Crew transfer platform on bow. Push pads for barge handling. Diving and ROV capability.

The data on this specification sheet has been published in good faith and should be considered for general information purposes only. It does not warrant its accuracy or completeness and to the full extent allowed by law excludes liability.

Survey Vessel



Zephyr

PRIMARY INFORMATION

Name: Zephyr

Vessel Type: Plate Aluminum, Mono Hull

Survey Category: 2C

Types of Operations: Survey / Environmental
Workboat Utility Vessel

Operational Area: Within 20NM of Coastal Radio
Station

Personnel Capacities: Max 4
(2 Crew + 2 Pax)

MMSI: 503066360

Builder: Goldstar Boats

Build Location: Perth W.A.

Build Year: 2018

Unique Vessel ID: 9695

ACCOMODATION FEATURES

Air-conditioned enclosed cabin

Twin monitor survey station

Pedestal seating

NAUTICAL & COMMUNICATIONS EQUIPMENT

Chart Plotter: Garmin Echomaps Plus

Depth Sounder: Garmin

GPS: Garmin

Compass: Magnetic

SPEED PERFORMANCE

Full Operation Speed: 25 Knots

Working Survey Acquisition Speed: 6 Knots

Range: 24 hr operations

DECK EQUIPMENT

Davit: Mounted port stern quarter (75kg)

Winch: 24V Side Scan Sonar tow fish winch

Moonpool: 600mm x 600mm

CAPACITIES

Fuel: 360 L

DIMENSIONS Measured Length: 7.85m

Measured Breadth: 2.7m

Measured Draft: 0.8m

MACHINERY

Propulsion: 2 x F175XCA Yamaha 130KW

Generator: 2 x 3 KVA Honda

AIS: Garmin

VHF Radio: ICOM

Auto Pilot: Garmin

Radar: Garmin