

## Port Of Cape Preston West – Dredging operations for the Mardie Project

Number: CPW01/2026 (T)

Date: 21/04/2026

---

<b>Date of effect:</b>	<b>21/04/2026</b>
<b>Details:</b>	<b>Port Of Cape Preston West – Dredging operations for the Mardie Project</b>
<b>Former notice:</b>	<b>NA</b>
<b>Charts and publications:</b>	<b>AUS 327 ENC Cell – AU42116 and AU42115</b>
<b>Further notice:</b>	<b>Will be cancelled once the dredging operation is completed</b>
<b>Attachments:</b>	<b>Diagrams of day shapes and light configurations the dredges, chartlet of dredge area, passage plan and spoil ground</b>

---

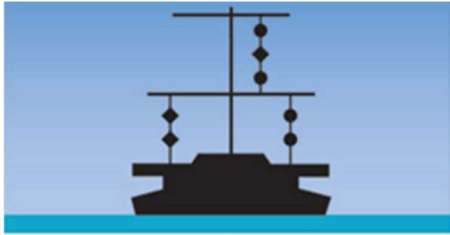
Mariners are advised that dredging operations will commence at the Port of Cape Preston West for the dredging of the transshipment channel to the BCI Minerals Mardie Salt and Potash jetty. The dredged materials will be dumped at the offshore disposal location DMPA4, located 15nm North of the Mardie jetty.

The following equipment will be deployed on site:

- BHD Woomera
- P.T. Monto
- P.T. Fortitude
- M.V Groote Eylandt
- Jetwave Vision
- Split Hopper Barges AOM 1801, AOM 1802 and AOM 23

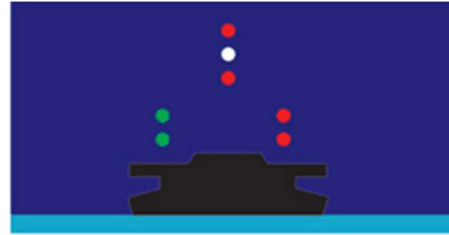
Mariners are advised to exercise caution when passing the dredge or tugs or barges working on site, please contact the vessel and make your intentions known to the operator. The dredges and tugs will be monitoring VHF Channels 11 and 16.

Day shapes and lights are used as per International Regulations for Preventing Collisions at Sea 1972 to let passing vessels know what the dredge is doing and what side to pass on. Below is a review of what day shapes and light configurations the dredges shall show and how to navigate around them.



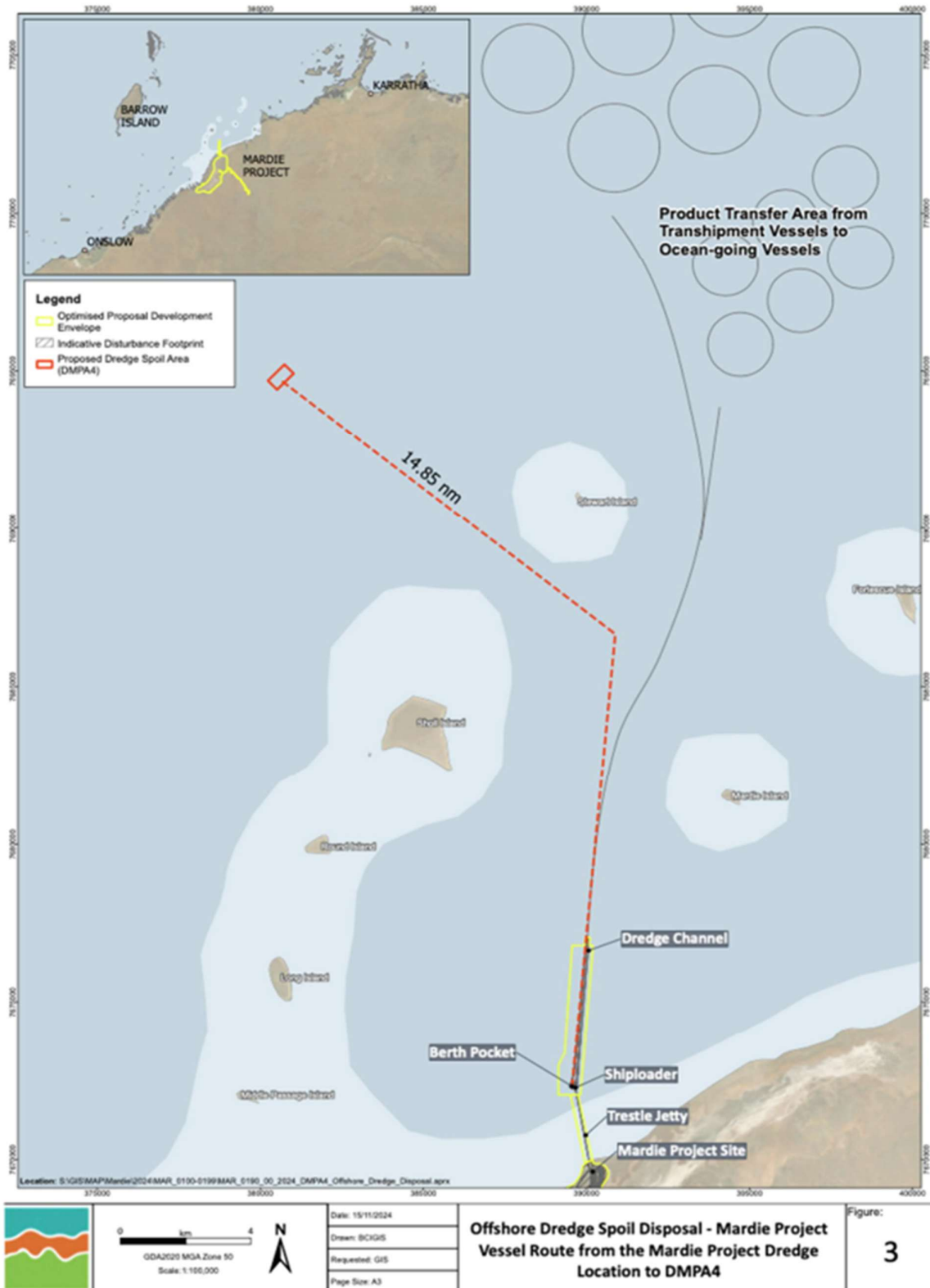
Safe side to pass  
(Diamonds)

Obstruction this side  
(Balls)



Safe side to pass  
(Green – Go)

Obstruction this side  
(Red – Danger)



---

Emergency Contacts for the Contractor are:

Name	Position	Contact no.
Fred Drew	Marine Superintendent	0459 591 114
Jacob Caric	Senior Project Manager	0436 126 669
Yoni Molly	Project Manager	0459 996 678

**Harbour Master  
Pilbara Ports West**