

## Port of Dampier – New Aids to Navigation – Special Marks

Number: D13/2025(T)

Date: 7/07/2025

Date of effect:	7/07/2025
Details:	Port of Dampier – New Aids to Navigation – Special Marks
Former notice:	NA
Charts and publications:	AUS 57, ENC Cell – AU421116
Further notice:	Cancellation in 3 months
Attachments:	Table and Chart detailing installation locations

Mariners are advised that following Navigation aids are being installed surrounding the Malus and West Lewis Mooring areas. These marks have been installed to demarcate the mooring areas bordering highly trafficked areas and improve navigational safety.

### Daylight Transit Guidelines

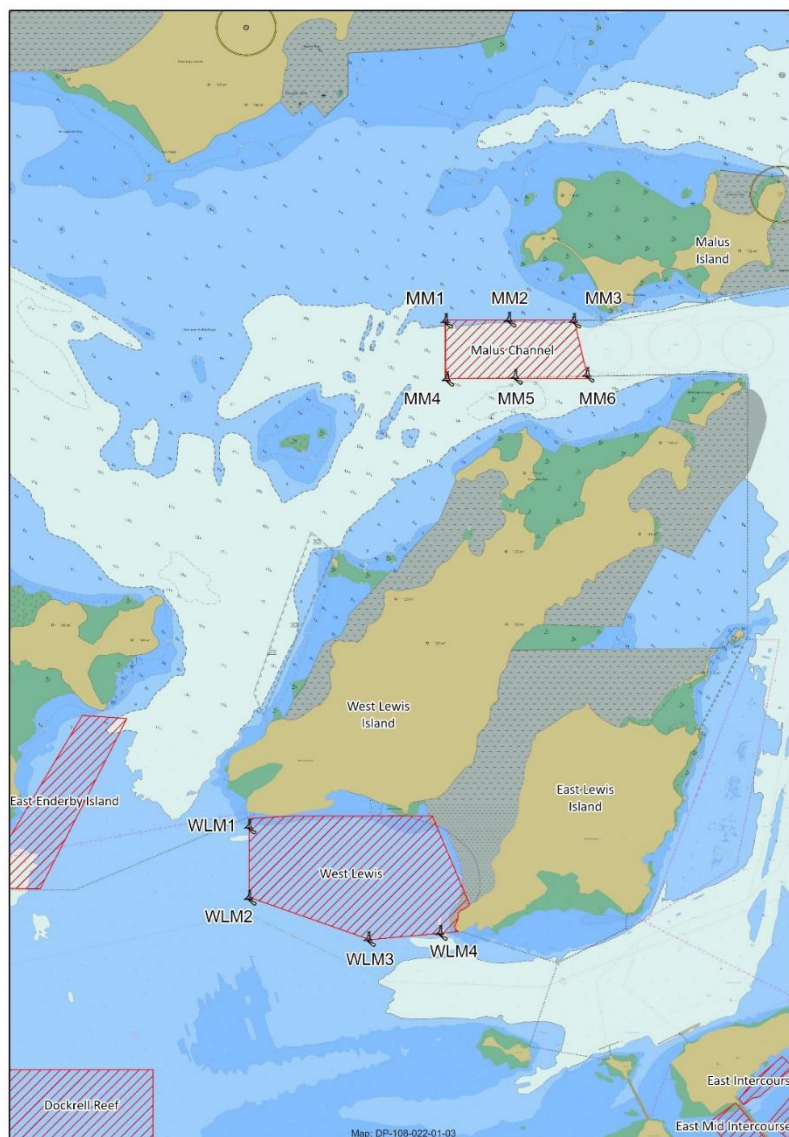
- **Avoid Transit Unless Necessary:** During daylight, vessels are advised to avoid transiting mooring areas unless heading to an approved mooring or servicing one.
- **Speed Limit:** WA state regulations stipulate an 8-knot speed limit within mooring areas during daylight hours.
- **Caution Advised:** Masters must navigate with caution, being aware of potential dangers such as mooring lines, buoys, and anchored vessels.

### Night-Time Transit Restrictions

- **Prohibited Transit:** Vessels are generally prohibited from transiting mooring areas during hours of darkness unless proceeding to an approved mooring or destination.
- **Permitted Transit Conditions:** If transit is necessary, vessels must be equipped with suitable aids to detect unlit mooring buoys and vessels, such as searchlights and radar.
- **Safe Speed Requirement:** Vessels must maintain a safe speed, considering the risks posed by unlit hazards and limited visibility.

These rules are designed to prevent collisions, protect marine infrastructure, and ensure safety for all vessels operating in mooring control areas.

Name	Latitude	Longitude	Aton Type	Light Characteristic
MM1	20° 31.65' S	116° 38.00' E	Special Mark	Fl.Y.3S.5M
MM2	20° 31.65' S	116° 38.66' E	Special Mark	Fl.Y.3S.5M
MM3	20° 31.65' S	116° 39.32' E	Special Mark	Fl.Y.3S.5M
MM4	20° 32.25' S	116° 38.00' E	Special Mark	Fl.Y.3S.5M
MM5	20° 32.24' S	116° 38.73' E	Special Mark	Fl.Y.3S.5M
MM6	20° 32.23' S	116° 39.46' E	Special Mark	Fl.Y.3S.5M
WLM 1	20° 36.85' S	116° 35.99' E	Special Mark	Fl.Y.3S.5M
WLM 2	20° 37.58' S	116° 35.99' E	Special Mark	Fl.Y.3S.5M
WLM 3	20° 38.01' S	116° 37.22' E	Special Mark	Fl.Y.3S.5M
WLM 4	20° 37.95' S	116° 37.96' E	Special Mark	Fl.Y.3S.5M



**Capt. Mike Minogue**  
**Harbour Master**