

Port of Dampier – King Bay Supply Base, Woodside and Pluto Channel Depth Declarations

Number: D20/2025

Date: 1/10/2025

Date of effect:	1/10/2025
Details:	Port of Dampier – Depth Declarations for Woodside and Pluto Channels
Former notice:	D04/2025 – Woodside and Pluto Channel Depth Declarations King Bay Supply Base – These depths supersede declared depths in Dampier Handbook
Charts and publications:	AUS 57, 59 ENC Cell – AU5058P0
Further notice:	Until Superseded
Attachments:	Chartlets

Port users are advised that based on the hydrographic surveys carried out on the below-mentioned berths and channels, the declared depths have been revised as indicated in the table.

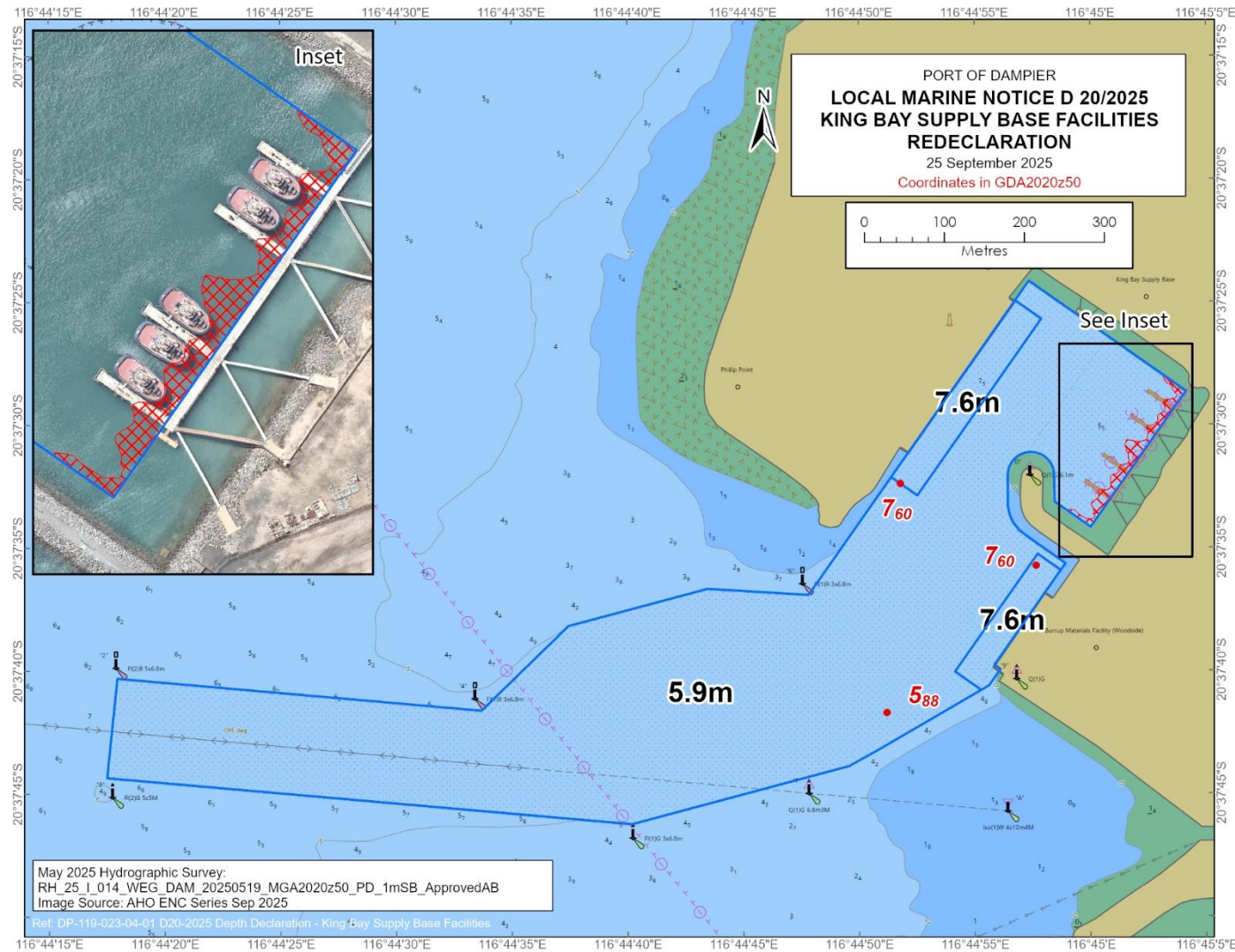
Woodside and Pluto - Berths & Channel	Declared Depth
Woodside Channel	12.1 m
Woodside Swing Basin	12.1 m
Withnell Bay Jetty 1 (LNG 1)	12.9 m
Withnell Bay Jetty 2 (LNG 2)	13.1 m
Withnell Bay Jetty 3 (LPG / Condensate)	13.6 m
Pluto Channel	12.4 m
Pluto Swing Basin	11.6 m
Pluto Jetty (LNG / Condensate)	13.2 m
King Bay Supply Base Channel	5.9m
King Bay Supply Base	7.6m
Burrup Materials Facility	7.6m
King Bay Supply Base Tug Pens*	5.8m

* Hashed area on inset chart indicate depths of less than 5.8m

Mariners are requested to take note of the changes to these depths.

Capt. Mike Minogue
Harbour Master

LOCAL MARINE NOTICE PORT OF DAMPIER



Dampier Vessel Traffic Service | Phone: (08) 9159 6556 | dampier.vts@pilbaraports.com.au

Mariners and other port users are requested to notify the Harbour Master on the discovery of new dangers or suspected dangers to navigation within the port. [All current local Marine Notices are available on our website.](#)

