

## Port of Dampier – Diving Operations within Toll Dampier Supply Base (TDSB)

Number: D09-2026 (T)

Date: 27/05/2026

Date of effect:	27/05/2026
Details:	Diving operations in the vicinity of the Burrup Seawater Intake Jetty within the TDSB
Former notice:	N/A
Charts and publications:	AUS59 & ENC cell AU5DAM02
Further notice:	Will be cancelled on completion of diving operations approximately on 01 June 2026
Attachments:	Annexes covering area of operation, exclusion zone, vessels involved and brief operational overview

**Area of operation (Annex 1):** Mariners are advised that diving operations to support the removal of seabed substrate will be conducted in the vicinity of the Burrup Seawater Intake Jetty within the Toll Dampier Supply Base (TDSB).

**Commencement of operation:** 22 May 2026

**Vessels involved (Annex 2):** Mary V – Dive support vessel (DSV) & Billy – Support vessel (SV). The vessels will exhibit the lights and shapes as required by the COLREGs and maintain listening watch on VHF Channels 11 and 16.

**Operational overview (Annex 3):** The DSV Mary V will be alternatively positioned at two (2) locations and will utilise a three (3) point mooring spread. The mooring spread will consist of:

- DSV's stern 'Stingray' anchor
- DSV's bow made fast to two (2) of the Burrup Seawater Intake Jetty's piles

The DSV's stern 'Stingray' anchor will be marked by a yellow buoy with a flashing yellow light (Fl.Y.1s).

**Exclusion zone (Annex 1):** A 50-metre exclusion zone will be established, as depicted in Annex 1.

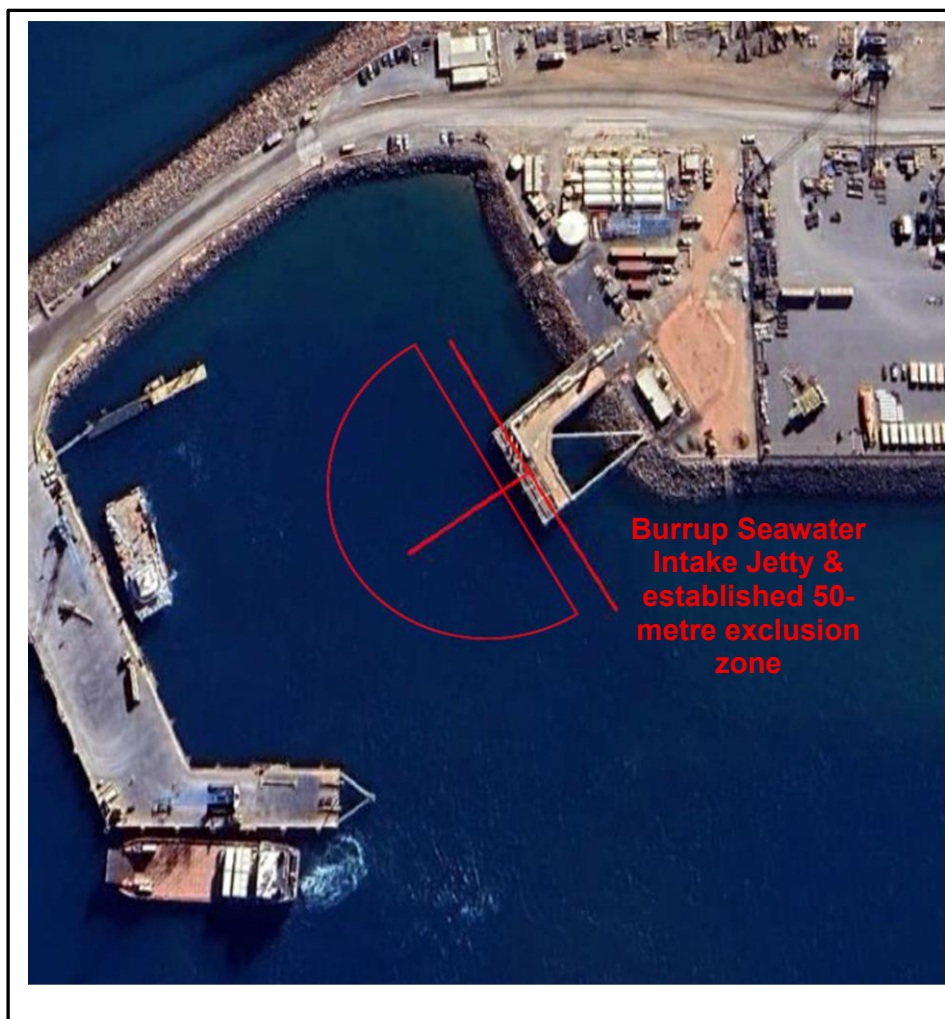
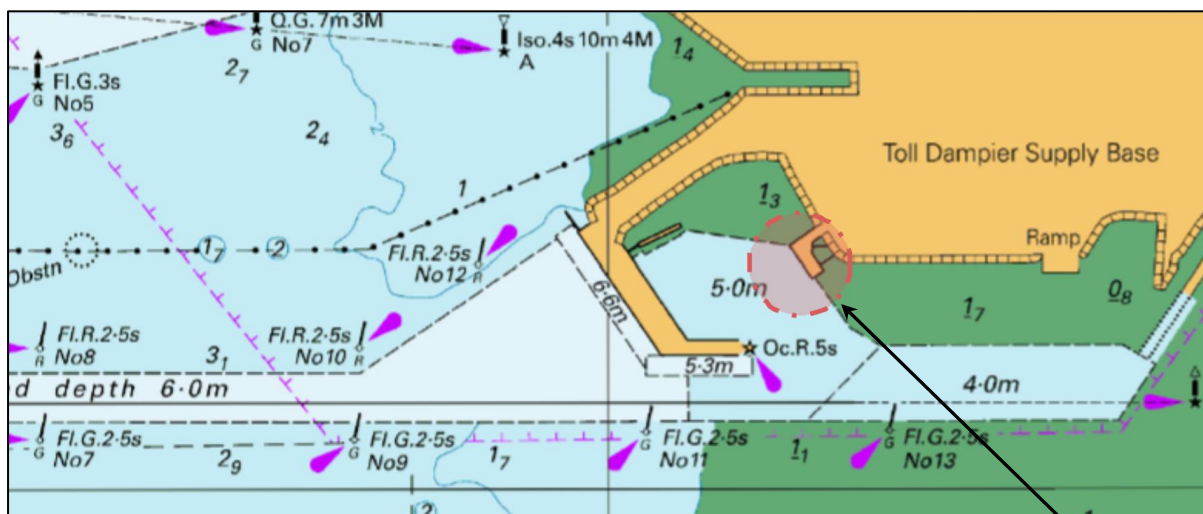
### Traffic management requirements:

- Vessels under 35 metres in length that can maintain a distance greater than 50 metres from the dive operations are requested to provide as wide a clearance as practicable and proceed at the minimum safe speed, generating no wake or wash.
- Vessels over 35 metres arriving at or departing from TDSB inner berths (berths 4, 5 and 6) must obtain positive confirmation from Dampier VTS that divers are out of water before transiting the area.
- Dampier VTS will broadcast regular Sécurité messages identifying the dive area.

Dampier Vessel Traffic Service | Phone: (08) 9159 6556 | [dampier.vts@pilbaraports.com.au](mailto:dampier.vts@pilbaraports.com.au)

Mariners and other port users are requested to notify the Harbour Master on the discovery of new dangers or suspected dangers to navigation within the port. [All current local Marine Notices are available on our website.](#)


Annex 1: Area of operation & exclusion zone



**Annex 2A: Vessels involved**

## VESSEL SPECIFICATIONS

### “MARY-V”



*“Success through safe diving”*

<p><b>Name;</b> “MARY-V”  <b>AMSA UVI;</b> 438630  <b>Call Sign;</b> VNW 6029  <b>DOT Survey;</b> 2B (200Nm 4 +8)  <b>OVID Report;</b> FQKB-7141-9785-7197                      (Insp: 25/07/24)</p>	<p><b>Deck Cargo;</b> 14t (Max)  <b>Deck Area;</b> 12m x 6m = 72m<sup>2</sup>  <b>Deck Crane;</b> Sea Crane 121-3                      (1000kgs@12m, &amp; 5000kgs@2.45m)  <b>Hyd Winch (2);</b> 2t Single Drum (&amp; Capstan)  <b>Anchor Winch (2);</b> Hydraulic with gypsy &amp; capstan  <b>Hyd Oil;</b> 280ltrs  <b>Comp Air;</b> 40 cu ft/min@10bar (Diving grade air)  <b>Desalination;</b> Citor (100ltr/hr)  <b>Fresh Water;</b> 1000ltr storage tank  <b>Hot Water;</b> 80ltrs (240V)  <b>Sullage;</b> 180ltr Storage – (Class A)  <b>Galley;</b> Microwave, T.V, Dinette, Fridge, Freezer</p>	<p><b>LOA;</b> 19mtrs  <b>Beam;</b> 6.3mtrs  <b>GWT;</b> 45 tonnes  <b>Built;</b> 07/2007  <b>Hull;</b> Aluminium Catamaran  <b>Accom;</b> 4 persons  <b>Propulsion;</b> 2 x Yanmar 6CXM-GTYE (360hp each)</p>	<p><b>Cruise Speed;</b> 10 kts  <b>Max Speed;</b> 14kts  <b>Range;</b> 750Nm (Cruise)  <b>Fuel;</b> 7000ltrs  <b>Consumption;</b> 80ltr/hr – Cruise speed  <b>Auxiliary;</b> IS16S (16kva) &amp; IS 34S (34 kva)</p>
--	---	--	--



**OCEANIC OFFSHORE<sup>PTY LTD</sup>**  
Commercial Diving Services

Tel: (08) 9183 6777  
 Email: [oceanic@oceanicoffshore.com.au](mailto:oceanic@oceanicoffshore.com.au)  
 Website: [www.oceanicoffshore.com.au](http://www.oceanicoffshore.com.au)

Annex 2B: Vessels involved

## VESSEL SPECIFICATIONS "BILLY"



*"Success through safe diving"*

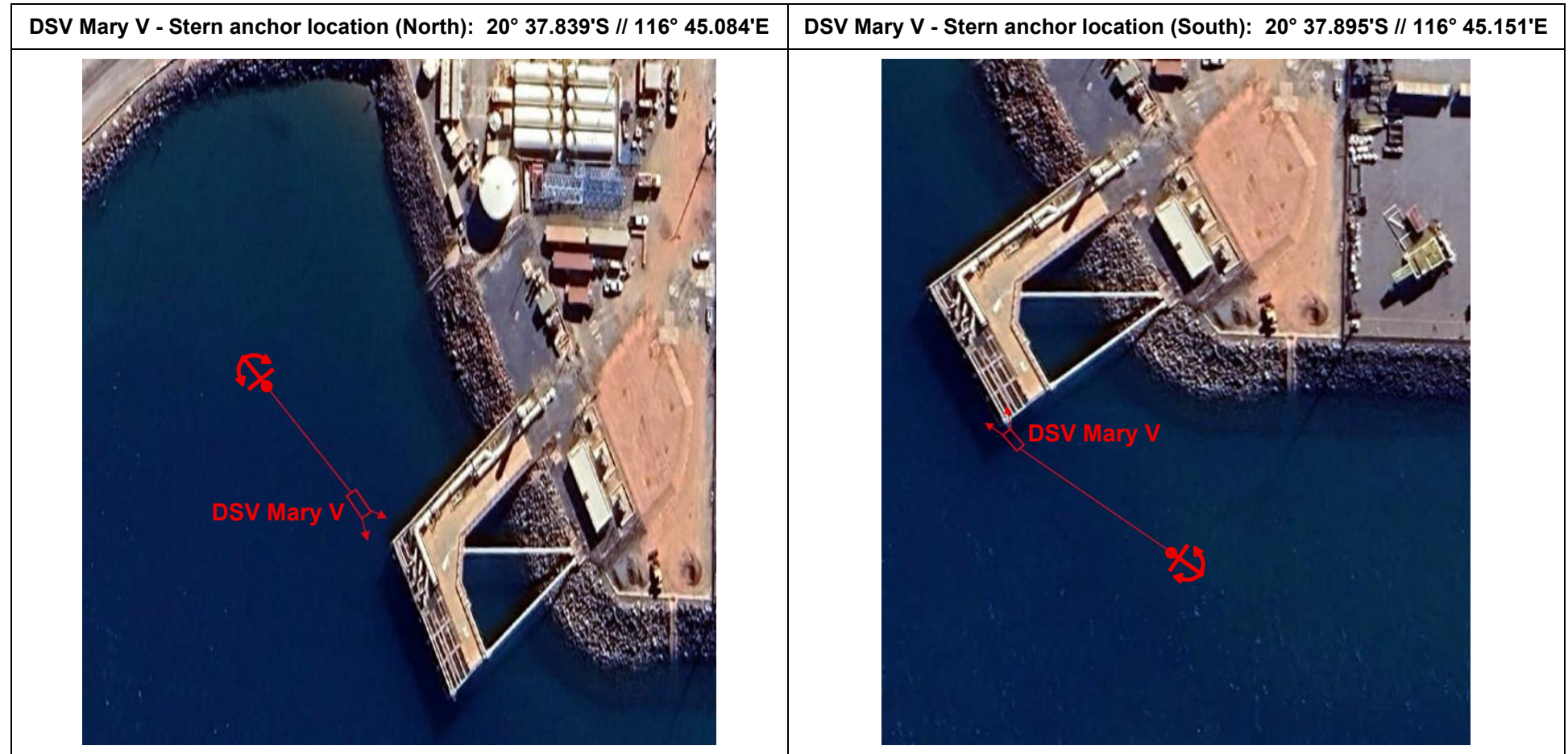
<b>Name;</b>	"BILLY"
<b>AMSA UVI;</b>	446949
<b>DOT Survey;</b>	2D (1 + 5)
<b>LOA;</b>	6.0m
<b>Beam;</b>	2.4m
<b>Draft;</b>	0.3m
<b>GWT;</b>	1.5t
<b>Hull;</b>	Aluminium Mono Hull
<b>Propulsion;</b>	Mercury O/B -150hp
<b>Cruise Speed;</b>	18 kts
<b>Max Speed;</b>	25 kts
<b>Range;</b>	100Nm (Cruise)
<b>Fuel;</b>	100ltrs
<b>Deck Cargo;</b>	500kgs (Max)
<b>Deck Area;</b>	3m x 2m = 6m <sup>2</sup>
<b>Deck Davit;</b>	DBI Sala – Man Riding (200kgs@1.2m)



**OCEANIC OFFSHORE** PTY LTD  
Commercial Diving Services

Tel: (08) 9183 6777  
Email: [oceanic@oceanicoffshore.com.au](mailto:oceanic@oceanicoffshore.com.au)  
Website: [www.oceanicoffshore.com.au](http://www.oceanicoffshore.com.au)

Annex 3A: Operational overview



---

**Annex 3B: Operational overview**



**Yellow marker buoy marking the stern anchor of DSV Mary V (FI.Y.1s)**

Capt. Mike Minogue  
**Harbour Master**  
**Pilbara Ports West**