

Port of Dampier - Aids to Navigation (AtoNs) Maintenance in the Rio Tinto Deepwater Channel

Number: D14-2026

Date: 8/07/2026

Date of effect:	9/07/2026
Details:	Aids to Navigation (AtoNs) Maintenance in the Rio Tinto Deepwater Channel
Former notice:	N/A
Charts and publications:	AUS57 & ENC Cell AU5DAM01
Further notice:	Will be cancelled on completion of maintenance operations (approximate completion date 10 July 2026)
Attachments:	Chartlets showing the location of the impacted AtoNs, the visual appearance of the AtoNs, and the maintenance vessel

Mariners are advised that scheduled maintenance on the floating Aids to Navigation (AtoNs) identified in **Table 1 & Figure 1** will be carried out **from 9 July 2026 to 10 July 2026**. The maintenance works will involve the removal of the existing AtoNs and their replacement with identical new assets (Figure 2). The removed AtoNs will be taken ashore for refurbishment and will remain out of service until reinstated.

AtoN	Latitude	Longitude	Buoy colour
Main Channel No. 1S	20° 26.501'S	116° 42.072' E	Green
Main Channel No. 2S	20° 27.026' S	116° 42.110' E	Green
Main Channel No. 2P	20° 26.913' S	116° 42.386' E	Red
Main Channel No. 3S	20° 27.355' S	116° 42.345' E	Green

Table 1

The maintenance works will be supported by marine operations undertaken from the maintenance vessel **ALAMO** (Call Sign: VJN 3661) (Figure 3) and **conducted during daylight hours**. The vessel will exhibit the prescribed shapes and lights in accordance with the Convention on the International Regulations for Preventing Collisions at Sea, 1972 (COLREGs) while engaged in the works. The vessel operator will monitor VHF channel 11 throughout operational periods.

Mariners are requested to maintain a **minimum clearance of 100 metres** from the works where practicable and proceed at minimum safe speed to ensure reduced wash. Where this clearance cannot be achieved, vessels must obtain positive confirmation from **ALAMO** prior to passing.

Capt. Mike Minogue
Harbour Master
Pilbara Ports West

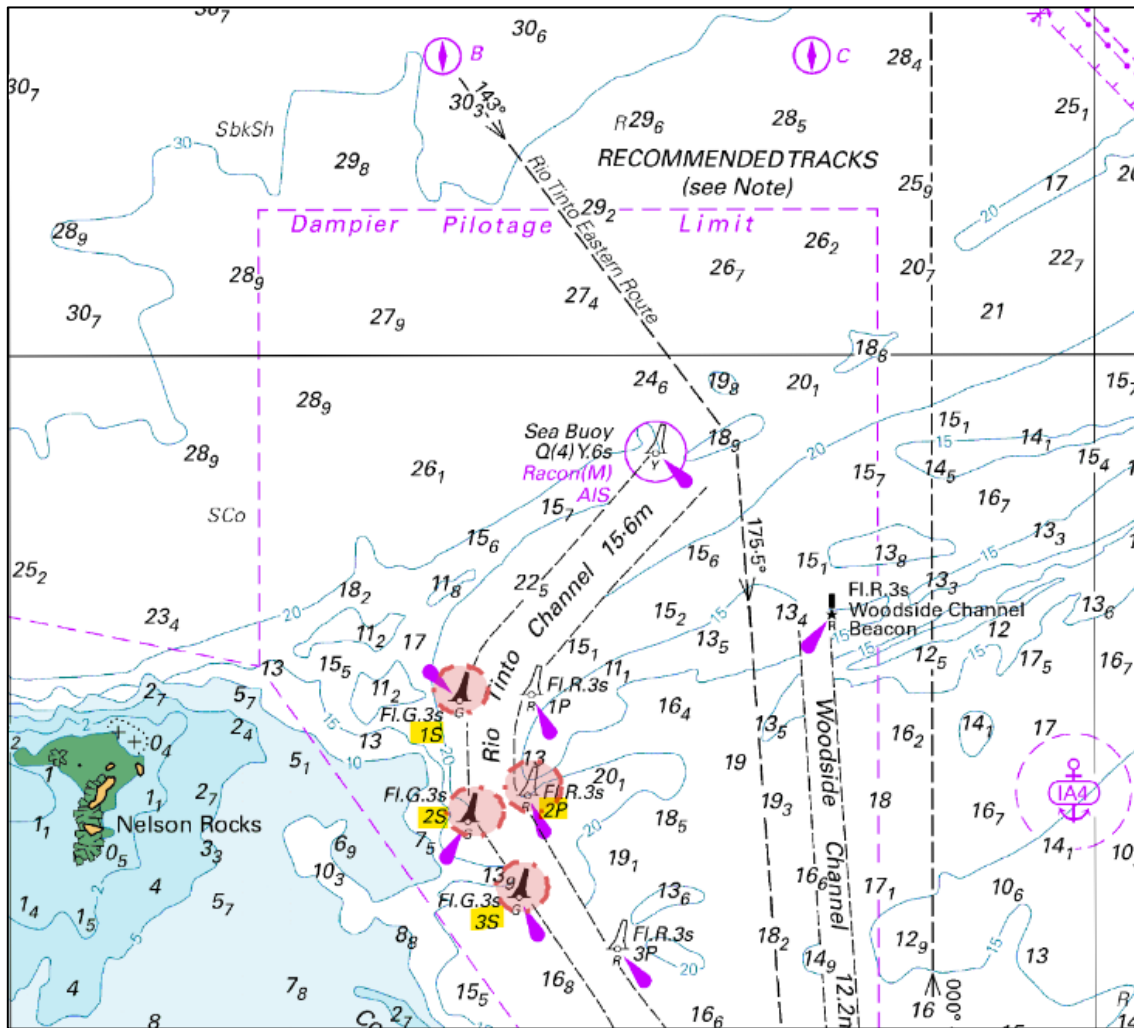


Figure 1

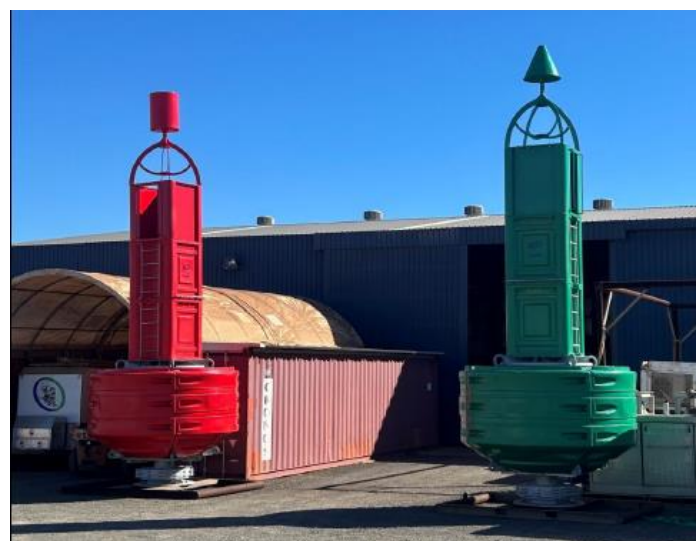



Figure 2



Oceanic Offshore Pty Ltd
PO Box 912
Karratha WA 6714
Telephone: (08) 9183 6777
Email: Oceanic@oceanicoffshore.com.au

Maintenance Vessel - ALAMO

Alamo
Work Barge/ Utility
Vessel



BHAGWAN
marine



BUILT:	Strategic Marina, Vietnam, 2011	CAPACITIES (CONTIN.)	
HULL:	Steel	LUBE OIL:	1m ³
CLASSIFICATION		DIRTY OIL:	1.6m ³
CLASSIFICATION:	DCV 2B	CLEAR DECK:	125m ³
FLAG:	AUSTRALIAN	MAXIMUM DECK CARGO:	125t
TRADING AREA:	Offshore 100m	CARGO DISCHARGE PUMPS	
CALL SIGN:	VJN 3661	FUEL CARGO:	40ph
M&H NUMBER:	6717	FRESHWATER:	40ph
DIMENSIONS		DECK EQUIPMENT	
LENGTH OVERALL:	27.2m	ANCHOR HANDLING WINCH:	100t
BEAM:	11m	KARM FORKS:	100t
DEPTH MOULDED:	3.3m	TOW PINS:	100t
DRAFT:	2m	TUGGER WINCHES:	2 x 5t (If Required)
GRT:	290t	CRANE:	HS Marine AKC 290 HE3
DEAD WEIGHT:	187.5t		SWL at 7.9 mts – 19.55t
MACHINERY			SWL at 15.15 mts – 9.34t
PROPULSION:	2x Azimuth Stern Drive	COMMUNICATIONS EQUIPMENT	
MAIN ENGINES:	2x Cummins K19-M3	RADAR SYSTEM:	1x Furuno 36nm
TOTAL POWER (KW):	2x 447 kW at 1800rpm	DEPTH SOUNDER:	1x Furuno 50/200 kw
GENERATOR:	2x Cummins (John Deer)	GPS:	1x Furuno GP32
SPEED AND CONSUMPTION		COMPASS:	1x Daiko Keiki Saisak Usho
FULL OPERATING:	7kts @ 155hr	CHART PLOTTER:	1x Maxsea
ECO. OPERATING:	5kts @ 135hr	AIS:	1x Furuno FA150
IN PORT:	3L/hr	HF RADIO:	1x Icom IC-M801E
BOLLARD PULL:	10t	VHF RADIO:	2x Icom IC-M505
CAPACITIES		UHF RADIO:	1x Motorola GM339
FUEL:	106m ³	SEARCHLIGHT:	1x Colorlight CL25-12
WATER:	125m ³	AUTO PILOT:	1x Simrad AP50
SULLAGE:	1m ³	ADDITIONAL DETAILS	
WATER BALLAST:	91.8m ³	FEATURES:	Air-Conditioned Bridge, Saloon Area, Toilet & Shower, 2 x Day Bunks Only.

Figure 3