

## LD25/054 – WSA Temporary Pedestrian Access from WSA to DCW and FDTs

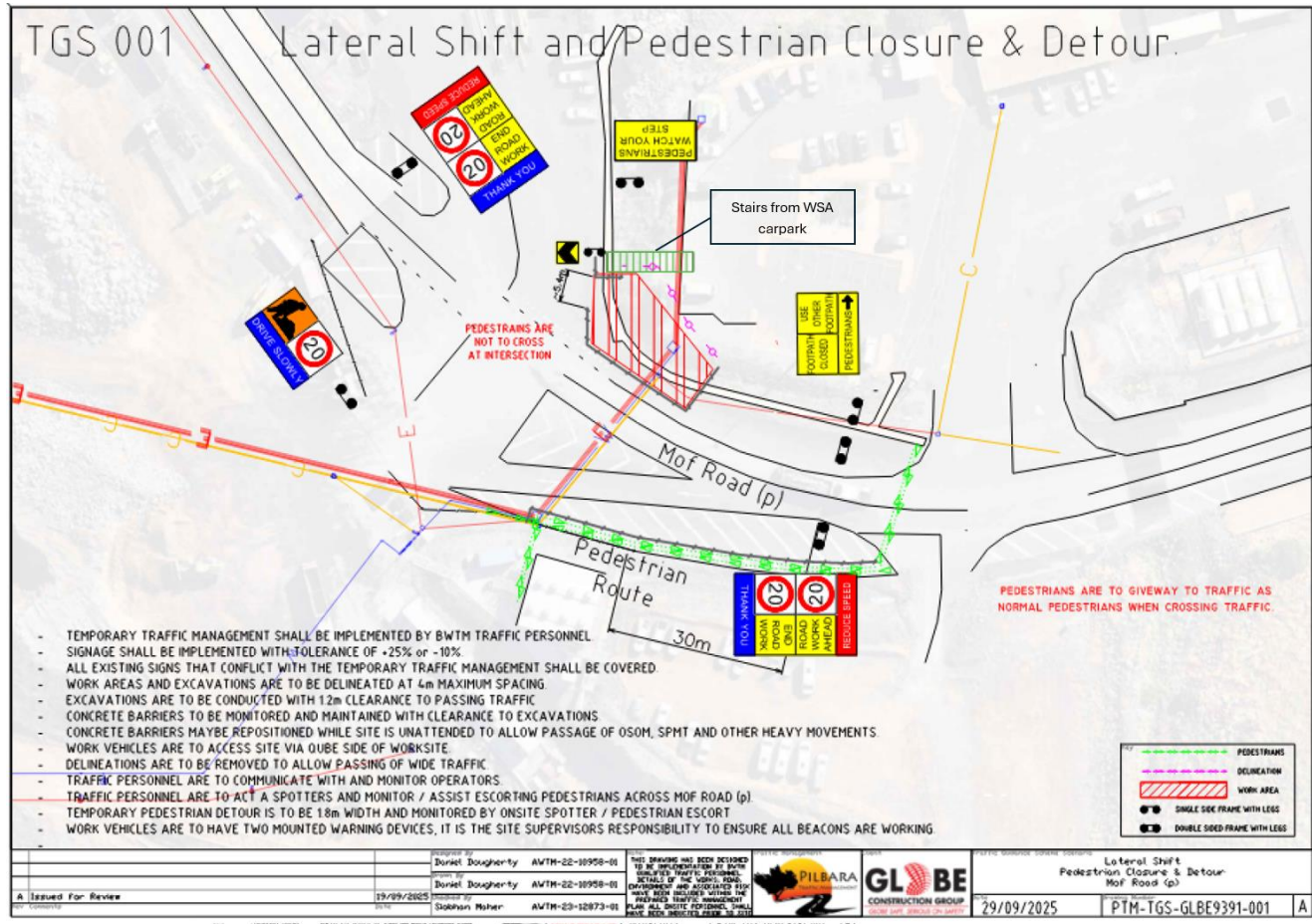
**ATTENTION:** All Port Users

**ISSUE DATE:** 2<sup>nd</sup> October 2025

**ISSUED BY:** Landside Operations Supervisor (Dampier)

Please be advised there will be a change to pedestrian access from the Wharf Services Area down to the DCW/FDTs. This access will be in place for approximately 8 x weeks whilst potholing and trenching occurs. There is a set of stairs from the WSA carpark which can be seen in the images below, the regular walkway will be blocked off and cannot be utilised.





Any queries or concerns regarding this should be directed to Landside Operations.